

# 4K DisplayPort Single Display KVM over IP Extender

## KE9950 / KE9952

- The KE9950 / KE9952 4K DisplayPort Single Display KVM over IP Extender consists of a high performance IP-based transmitter (KE9950T / KE9952T) that connects to the computer and receiver (KE9950R / KE9952R) that provides console access from a separate location. The KE9950 / KE9952 allows access to a computer system from a remote USB console (USB keyboard, USB mouse, DisplayPort monitor) over an intranet, enabling users to locate computers in a secure and temperature controlled environment, which is isolated from users' workstation.

The KE9950 / KE9952 supports one DisplayPort display at each end, providing video resolutions up to 3840 x 2160 @30Hz (4:4:4) as well as flawless and lossless video compression quality with minimal latency.

Both KE9950 and KE9952 support connections via an RJ-45 port or a SFP slot. The transmitter and receiver can be connected either directly to each other or via a high-speed network, over a copper-based or fiber-based LAN, ensuring 24/7 availability of remote access to servers. To connect via the SFP slot, the extender supports 1Gbps SFP fiber module\* expansions, enabling connections via fiber optic network to extend transmission distances up to 10km.

The KE9950 also provides dual power supplies for redundancy. Meanwhile, the KE9952 features Power over Ethernet (PoE) function, the power can be supplied through a PoE Network Switch; therefore, eliminating the need for a power adapter and effectively reducing the power configuration cost.

The KE9950 / KE9952 can be set on a desk, mounted on a wall or at the rear of a rack with its space-saving 0U rack-mount design. As an IP-based matrix extender, the KE9950 / KE9952 can be used as a point-to-point / point-to-multipoint / multipoint-to-point extender, or integrated into a KVM over IP Matrix System (multipoint-to-multipoint) when combined with the KE Matrix Management Software (CCKM), providing more flexible applications in different working environments.

When integrated with the KE Matrix Management Software, the KE9950 / KE9952 supports more advanced features such as boundless switching, "Push" and "Pull", video wall and multi-display setups, and profile scheduling that provide uninterrupted access with quick and easy control tools to use the KE9950 / KE9952 over a network.

More functions include auto detection of all KE Series extenders\*\* in the same subnet for the sake of fast installation or configuration, username / password authentication and authorization, and the ability to define different types of connections that can be switched and shared. Security features also provide extra protection, supporting AES encryption for secured data transmissions, while RADIUS, LDAP, AD or remote user authentication provides an added layer of connection security; moreover, with an OSD, RS-232 support, and Auto MDIX, the KE9950 / KE9952 is the most cost-effective and convenient way to get a full digital extension from anywhere on the intranet.

Whether you're monitoring, operating, controlling or extending computer access, the KVM over IP Matrix System is made adaptable, to fit an endless variety of working environments and workstation settings, to provide solutions in traffic management centers, retail surveillance centers, facility situation rooms, command control centers, utilities process control centers, broadcasting distribution monitoring systems, network operations centers (NOC), and many other industries where matrix extending is required.

\*The SFP module (2A-136G / 2A-137G) is sold separately. Contact your ATEN dealer for product information.

\*\*Refer to [www.aten.com](http://www.aten.com) for a list of the KE Series extenders.

KE9950R / KE9950T Front View



KE9950R

KE9950T

KE9952R / KE9952T Front View



KE9952R

KE9952T

KE9950R / KE9950T Rear View



KE9950R

KE9950T

KE9952R / KE9952T Rear View



KE9952R

KE9952T

## Features

### Advanced Features\*

- Boundless Switching - simply move the mouse cursor across screen boundaries to switch between different receivers (Rx)
- "Push" and "Pull" – share content instantly to/from a single Rx or video wall by just one click
- Video Walls – create multiple video walls with up to 8 x 8 (64 displays max.) in each layout
- Advanced Scheduling – improves efficiency and saves costs by allowing connections to be set based on time and date
- Virtual Transmitter – independently streams video, audio, USB, and serial sources from different Tx
- Support both internal and external authentication – external authentication supports LDAP, Active Directory, RADIUS and TACACS+
- Advanced User Authorization Settings – administrators can set four access modes of permissions on Tx devices for collaboration or to avoid interference among users
- Configurable user and group permissions for access and control of KE devices
- Tx grouping of up to 4 sets of KE transmitters to support multi-display applications
- Rx access control – users at the Tx local console can enable / disable Rx access by simply pressing a control button\*\*

\*These advanced functions are supported when the KE transmitters are paired with KE receivers and managed by KE Matrix Management Software (CCKM)

\*\*The KVM over IP Access Control Box (2XRT-0015G) is sold separately. Contact your ATEN dealer for product information.

## Hardware

- Supports DisplayPort video resolutions up to 3840 x 2160 @30Hz (4:4:4); 36-bit color depth
  - Supports digital video output
  - Compliant with DP 1.2 and HDCP 1.3
  - Supports stereo speakers and stereo microphone
  - Supports Virtual Media or vUSB
  - Auto-MDIX – automatically detects cable type
  - Built-in 8KV/15KV ESD protection and 2KV surge protection
  - Fanless design for silent operations that are energy efficient
  - Supports connection via Gigabit Ethernet port (RJ-45) or SFP port for failover or for dual IP addresses access
  - Support 1Gbps SFP fiber module expansions\*\*\*up to 10 km
  - Power Redundancy – Dual DC Jack (KE9950 only) or 1 DC Jack + PoE (KE9952 only)
  - Support Power over Ethernet (PoE) function – compliant with the IEEE 802.3at standard (KE9952 only)
  - Rack Mountable – Mounting options:
    - 2X-021G Dual Rack Mount Kit
    - 2X-031G Single Rack Mount Kit
- \*\*\*The SFP module (2A-136G / 2A-137G) is sold separately. Contact your ATEN dealer for product information.

## Management

- Centralized KE Series management software – KE Matrix Management Software (CCKM) allows users to easily administrator all KE devices with an intuitive web-based GUI
- Dual console operation – controls your system from both the transmitter's and receiver's keyboard, monitor, and mouse consoles
- Local console for emergency operation
- OSD (On Screen Display) on the Receiver configures both Tx / Rx devices
- EDID Expert™ – selects optimum EDID settings to prevent video compatibility issue caused by different monitors
- On-screen Preview – allows users to view the video of up to 36 displays on one screen
- Video Compression Level – allows you to increase/decrease the video quality to adjust for appropriate network bandwidth
- CLI – administrators can control all KE devices via RS-232 or Telnet by issuing commands
- RS-232 serial ports – allow you to connect to a serial terminal for TextMenu, CLI, or serial devices such as touch screens and barcode scanners
- Compatible with all KE devices

## Security

- Dedicated LAN port for KE direct connections – can be isolated from the corporate network
- Secure data transmission – AES encryption to secure Video / Keyboard / Mouse / Data transmission
- Supports industry standard Transport Layer Security (TLS) protocol

## Virtual Media

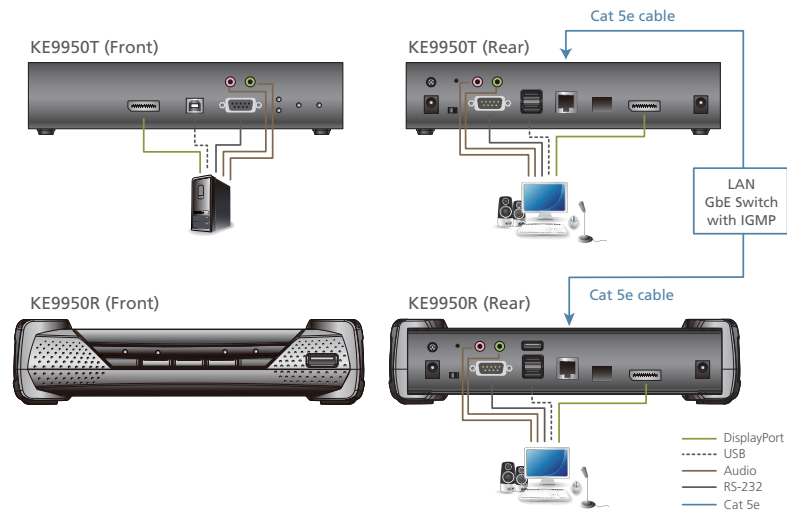
- Virtual Media mode enhances data transmission performance, ideally for file transfers, OS patching, software installations and diagnostic testing
- Supports USB 2.0 DVD/CD drives, USB mass storage devices, PC hard drives and ISO images
- Supports Smart Card/CAC Reader

## Highlights

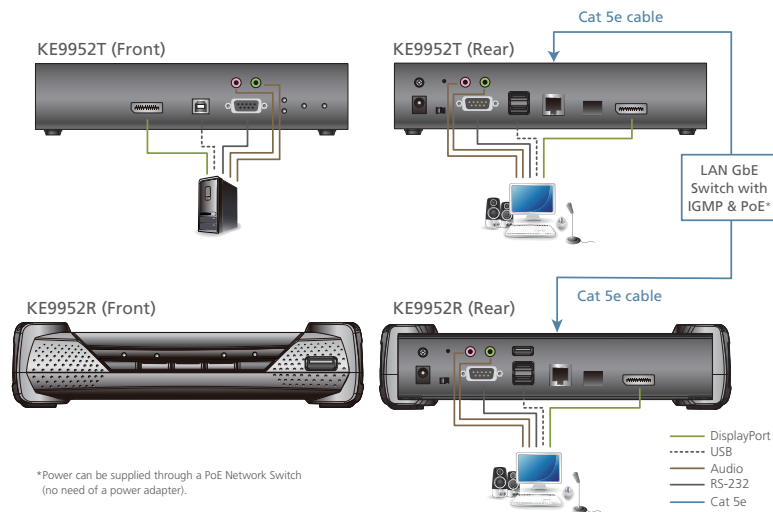
<b>Over IP</b>	Extend a computer's KVM console any distance over a LAN by connecting the Tx and Rx units to your network. Extend a computer's KVM console up to 100 meters by directly connecting the Tx and Rx units with a single Cat 5e/6 cable. Standard IP protocols ensure maximum compatibility with your existing IT infrastructure and staff skill set.
<b>Superior Video Quality</b>	ATEN's advanced graphics processor delivers video that ensures you to experience the same vivid and sharp image quality on the remote monitor no matter how far away the console is located. The KE9950 / KE9952 supports DisplayPort video resolutions up to 3840 x 2160 @30Hz (4:4:4); 36-bit color depth.
<b>Redundancy</b>	The KE9950 / KE9952 supports connection via Gigabit Ethernet port (RJ-45) or SFP port for failover or for dual IP addresses access. Besides, the KE9950 supports dual power and the KE9952 features Power over Ethernet (PoE) for redundant power supply. For KE9952, the power can be supplied through a PoE Network Switch; therefore, eliminating the need for a power adapter and effectively reducing the power configuration cost.
<b>SFP Module</b>	<p>The KE9950 / KE9952 supports 1Gbps SFP fiber module expansions, enabling connections with network switch which allow inserting either an optical Fiber Channel SFP module or Active Copper SFP module. The single-mode SFP module provides 1GbE connectivity up to 10 kilometers while the multi-mode SFP module provides 1GbE connectivity up to 550 meters.</p> <p><b>Note:</b> The SFP module (2A-136G / 2A-137G) is sold separately. Contact your ATEN dealer for product information.</p>
<b>Advanced Management System</b>	The KE Matrix Management Software (CCKM) allows you to easily administer all KE devices over a network, using an intuitive user-friendly web based GUI.
<b>Boundless Switching*</b>	Simply move the mouse cursor across screen boundaries to switch between different receivers. The function expedites the process of switching between receivers for a smooth and hassle-free user experience and enables immediate monitoring and management of receivers.
<b>Flexibility</b>	The KE extender allows you to access, share, and switch full control of Tx connected computers - from any Rx (KVM console) on the network. Flexibly allows One-to-One, One-to-Many, Many-to-One, or Many-to-Many computer to KVM console connections.
<b>Enhanced Security Features</b>	Compliant with universal enterprise grade security standards (AES encryption to secure Video/Keyboard/Mouse/Data transmission and Transport Layer Security (TLS) protocol). The KE extender provides different levels of username / password authentication and authorization.

\*These advanced functions are supported when the KE transmitters are paired with KE receivers and managed by KE Matrix Management Software (CCKM)

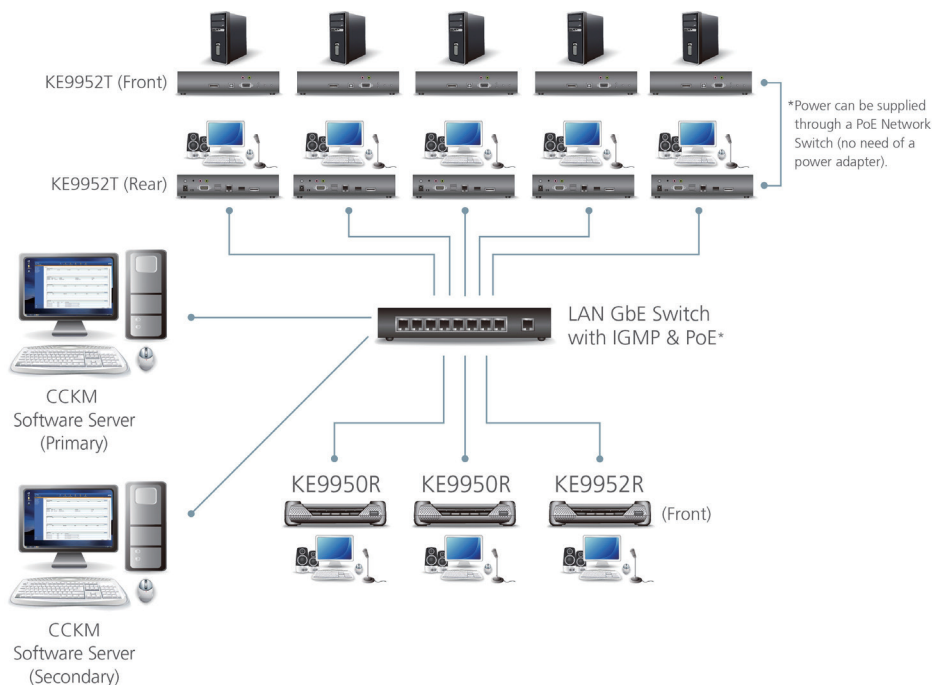
### KE9950 Diagram



### KE9952 Diagram



### Reference Installation Diagram



# Specifications

Functions	KE9950R		KE9952R	KE9950T	KE9952T
Connectors					
Virtual Media	2 x USB Type A Female (White)			N/A	
Console Ports	2 x USB Type A Female (White)				
	1 x DisplayPort Female (Black)				
	1 x Mini Stereo Jack (Green)				
	1 x Mini Stereo Jack (Pink)				
	1 x DB-9 Male (Black)				
KVM Ports	N/A			1 x USB Type B Female (White)	
				1 x DisplayPort Female (Black)	
				1 x Mini Stereo Jack (Green)	
				1 x Mini Stereo Jack (Pink)	
				1 x DB-9 Female (Black)	
Power	2 x DC Jack (Black)	1 x DC Jack (Black)	2 x DC Jack (Black)	1 x DC Jack (Black)	
LAN Ports	1 x RJ-45 (Black)	1 x RJ-45 (Black, PoE)	1 x RJ-45 (Black)	1 x RJ-45 (Black, PoE)	
	1 x SFP Slot				
Switches					
OSD	1 x Pushbutton			N/A	
Video	1 x Pushbutton			N/A	
Graphics	1 x Pushbutton			N/A	
Reset	1 x Semi-recessed Pushbutton				
LEDs					
10 / 100 / 1000 Mbps	1 (10: Orange / 100: Orange & Green / 1000: Green)				
Power	1 (Blue)				
Local	1 (Green)				
Remote	1 (Green)				
Video Resolution	3840 x 2160 @ 30Hz (4:4:4)				
Emulation					
Keyboard / Mouse	USB				
Power Consumption	DC5V :8.03W	DC48V: 10.04W		DC5V: 9.51W	DC48V :11.88W
Environmental					
Operating Temperature	0-50°C				
Storage Temperature	-20-60°C				
Humidity	0-95% RH, Non-condensing				
Physical Properties					
Housing	Metal				
Weight	1.24kg	1.27kg		1.12kg	1.15kg
Dimensions (L x W x H)	22.75 x 17.16 x 5.48 cm			21.5 x 16.29 x 4.18 cm	

Product information is subject to change without prior notice.

## ATEN International Co., Ltd.

3F., No.125, Sec. 2, Datong Rd., Sijhih District., New Taipei City 221, Taiwan  
Phone: 886-2-8692-6789 Fax: 886-2-8692-6767  
www.aten.com E-mail: marketing@aten.com

Publish Date: 01/2019 V1.0



© Copyright 2019 ATEN® International Co., Ltd.  
ATEN and the ATEN logo are trademarks of ATEN International Co., Ltd.  
All rights reserved. All other trademarks are the property of their respective owners.