

iBoot-PoE

Reboots the failed system to get you back online fast!

Easiest Way to Minimize Downtime

Minimize downtime to keep your critical systems running and your customers happy. iBoot provides automatic and web controlled power switching to quickly get you back online fast.

This model has the ability to become an active PoE Extender, PoE Injector or Passive Extender. If you are looking for a basic A/C product with a limited amount of features, please check out the **iBoot-G2**.

Control one or many iBoots with a single sign-on using the free iBoot Cloud Service. Just log in and you are instantly in control of as many locations as necessary.

Top Features:

Simple Web Browser Operation

Just point your browser to the iBoot, login and you are one click away from bringing that failed system back to life

All setup functions are easy to configure from the browser

Free Cloud Service

Manage an unlimited number of iBoots from a single login

Eliminate port forwarding and dynamic DNS issues

More secure with outbound connections only

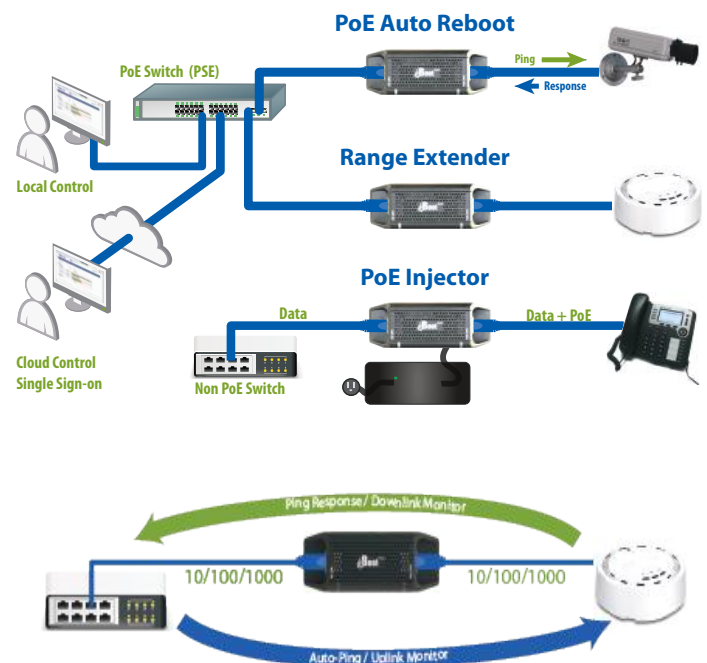
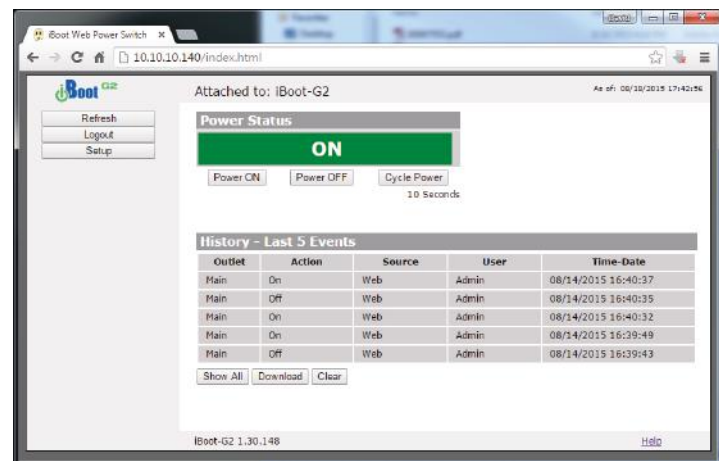
PoE Injector

With the optional power supply, iBoot-PoE becomes an injector making it easy to add PoE devices onto your network and have automatic self-healing and managed reboot built right in

PoE Extender

Gives you up to 25.5 Watts of power for your devices

Designed to protect non-PoE devices that may be inadvertently connected



Additional Features

Automatic System Restoral	AutoPing detects network or equipment outage and takes immediate action to restore your network or device. Real-time scheduling to have a fresh reboot each morning or minimize power waste at night.
IP Addressed, 10/100/1000 Eth.	Use on any Ethernet IP Network, (public or private) Supports DHCP and alternate ports for Web Access.
Easy Integration	Control iBoot-PoE directly from your software application, web page or network management scheme. Sample code in several languages are provided. Configuration tools make it easy to deploy a large number of units across your organization.
Active PoE Extender	Compliant with IEEE 802.3af and 802.3at standards. Protects non PoE products from accidental damage.
PoE Injector	With the Add-on Power Supply, iBoot-PoE becomes a complete midspan injector with reboot.
PoE Traffic Injector	Take action based on setable minimum or maximum network traffic.

Specifications

Subject to Change Without Notice

Physical:	H x W x D: 4.90" x 1.85" x 1.34" (124mm x 47mm x 34mm) Operating Temperature 0 to 50 Deg. C
PoE Standards:	<i>iBoot-PoE: Active Extender:</i> PoE, PoE+ IEEE 802.3af 802.3at, Up to 25.5W <i>iBoot-PoE-I Active Injector:</i> PoE, PoE+ IEEE 802.3af 802.3at, Up to 25.5W <i>iBoot-PoE-P Passive Extender:</i> 9 – 72 VDC and 802.3af, Mode A, Mode B and 4PPoe Wiring
Led Indicators:	LED's on Network Jacks indicate network status Net In: Power to the iBootPoE PoE Out: Power Supplied to PD
Ethernet:	10/100/1000 Full or Half Duplex Auto Sensing Uplink/Downlink Cat 5 Cable Included 6'/2m long
Security:	Dual Password Protected, User and Admin

Other iBoot Models

iBoot-G2+

Expandable to 3 outlets and additional features

iBoot-G2S

Full Featured with built-in 10/100 network switch for easy integration

iBoot-DC

DC Powered Version
5 - 48VDC up to 5 Amps

iBoot-I0

Contact or Voltage Level
Control of AC Power

iBoot-G2

Equipped with all of the essential basic features

For More Information

www.dataprobe.com/iboot-poe/

Phone: 201-934-9944

Fax: 201-934-9090

Email: sales@dataprobe.com

Website: dataprobe.com

Follow Us:



dataprobe
Making Every Network More Reliable