

# Avocent® HMX 5150T/6150T High-Performance Transmitters



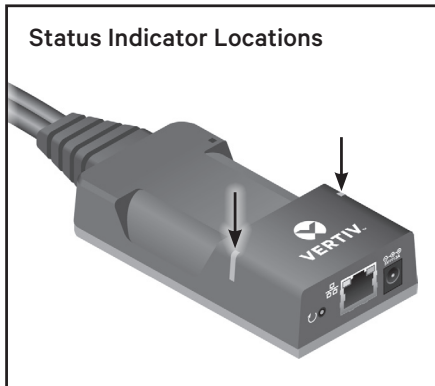
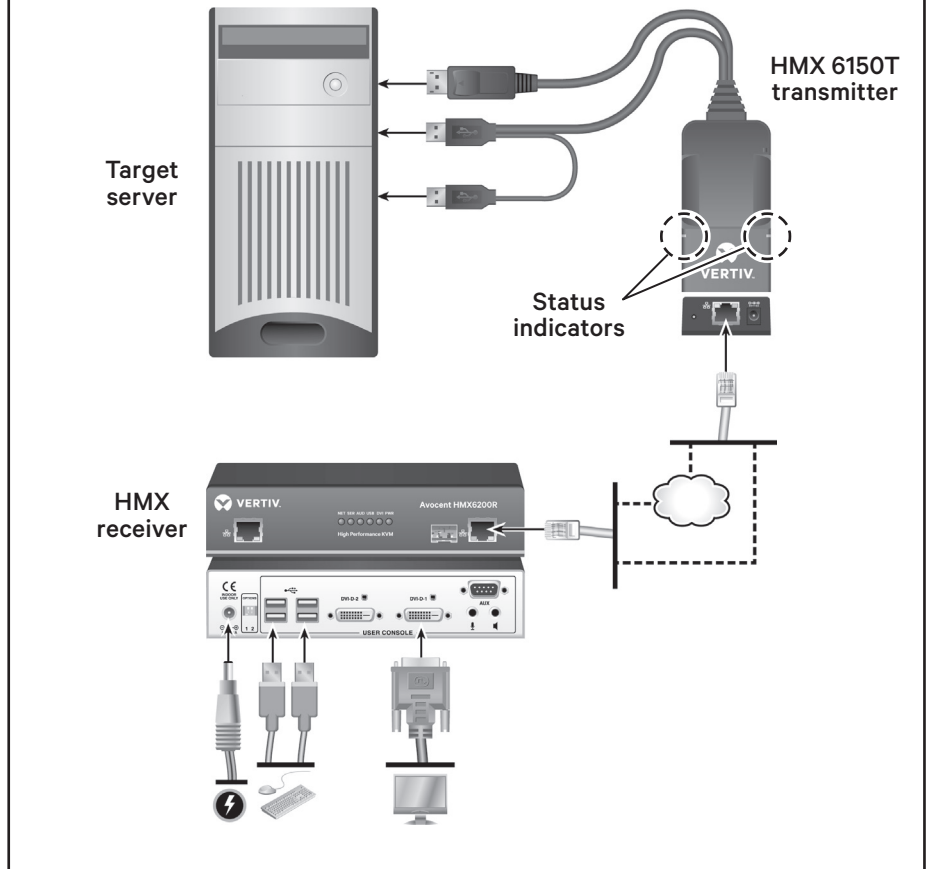
## Quick Installation Guide

Avocent HMX 5150T and 6150T high-performance KVM transmitters are zero-U, IP-based devices that transfer data between a target server and an HMX receiver.

Transmitters can be linked in either a direct or networked configuration.

The indicators on the top panel of the transmitter provide operation information. See the table on the right for additional information on the status indicators.

### HMX 6150T Transmitter Configuration



### DIRECT LINKED

When HMX 5150T or 6150T transmitters and HMX receivers are directly linked to each other, no additional configuration is required.

**NOTE:** If the standard settings have been changed in a previous installation, you must perform a manual factory reset on each transmitter. For more information, see the Avocent HMX High Performance KVM Extender System Installer/User Guide.

### MAIN STATUS INDICATORS

Off	No power.
Green	Video, USB and network links are all present and operating normally.
Orange	Operating but video, USB and/or network link missing.
Red	Consistent - transmitter has failed and requires a reboot Flashing - transmitter is booting.
Red/green flashing	Transmitter is in backup mode.
Blue	Factory reset has been activated.
Red/blue flashing	Transmitter is in upgrade mode.
Fast green flash	Transmitter is in identify mode.

### NETWORK LINKED

When HMX 5150T or 6150T transmitters are connected via an Ethernet network, you can configure them individually or collectively using the HMX Advanced Manager software:

- **Individual configuration**

Transmitters are configured via their web page.

**Accessing the browser-based configuration**

Using a computer connected to the same network as the transmitter, open a web browser and enter the IP address **169.254.1.33**.

From the main screen, you can manually configure the IP address of the transmitter, perform an upgrade or change the USB and video settings, as needed.

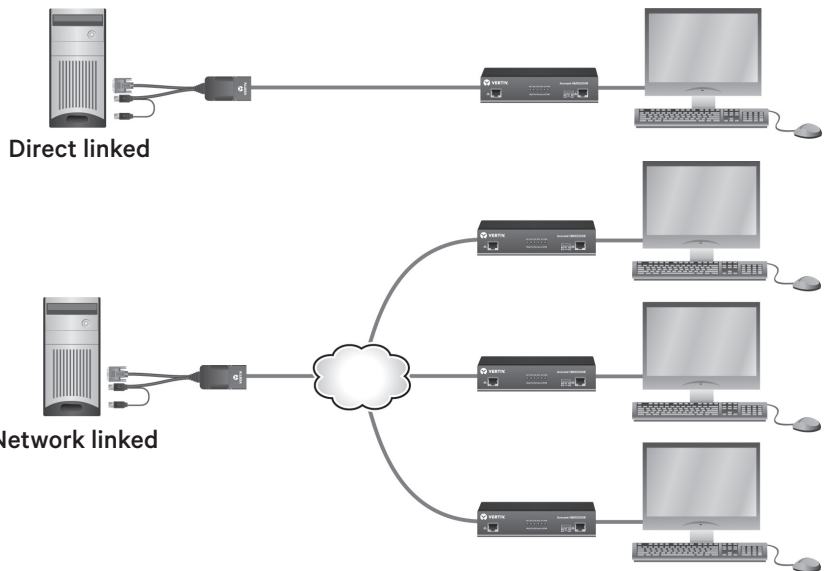
**NOTE:** If you do not know the IP address of the transmitter, you must perform a factory reset to restore the default address.

- **Collective configuration**

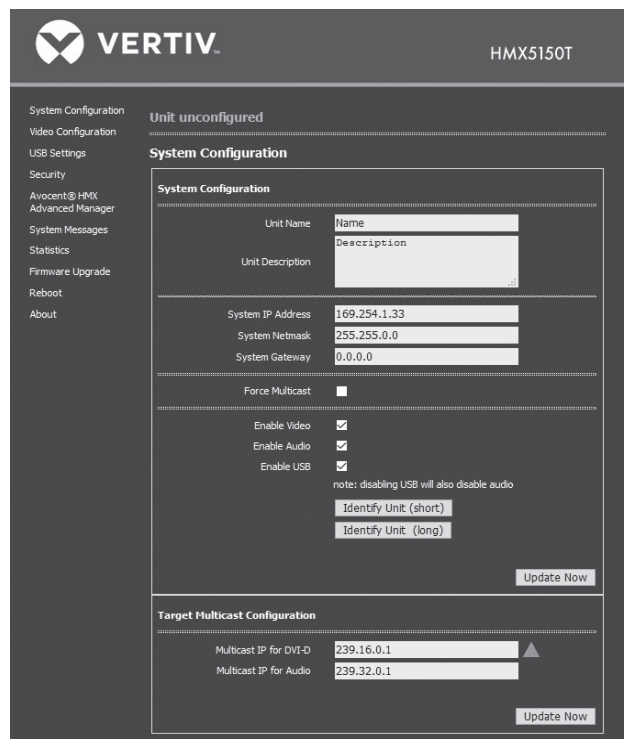
You can configure, control and coordinate multiple transmitters and receivers from a single application with the HMX Management software. For more information, see the Avocent HMX Advanced Manager Installer/User Guide.

**IMPORTANT:** When using HMX Manager software to configure transmitters, it is vital all transmitters you wish to locate and control are set to their factory default settings. Otherwise, they will not be located by the HMX Advanced Manager software server. If necessary, perform a manual factory reset on each transmitter.

### HMX 5150T Transmitter Linking Options Overview



### HMX 5150T Transmitter Configuration Web Page



**To contact Vertiv Technical Support: visit [www.Vertiv.com](http://www.Vertiv.com)**

© 2021 Vertiv Group Corp. All rights reserved. Vertiv™ and the Vertiv logo are trademarks or registered trademarks of Vertiv Group Corp. All other names and logos referred to are trade names, trademarks or registered trademarks of their respective owners. While every precaution has been taken to ensure accuracy and completeness here, Vertiv Group Corp. assumes no responsibility, and disclaims all liability, for damages resulting from use of this information or for any errors or omissions. Specifications, rebates and other promotional offers are subject to change at Vertiv's sole discretion upon notice.

