



## SMART, SECURE REMOTE ACCESS AND CONTROL OF CENTRALIZED AND DISTRIBUTED IT ASSETS

**Gain consolidated access to physical and virtualized servers, serial devices and Raritan's Dominion appliances from a single, secure appliance.**

Raritan's CommandCenter Secure Gateway (CC-SG) provides IT and lab organizations with secure and consolidated access and control of all technology platforms at the application, operating system and BIOS level. CC-SG's single pane of glass helps simplify remote management and expedite troubleshooting of your physical and virtual servers, intelligent PDUs, and serial devices. Plus, it helps you maximize uptime and productivity of these devices, while reducing network overhead and Total Cost of Ownership (TCO).

From small and medium server rooms to large enterprises with multiple data centers, CC-SG is relied upon worldwide for secure and consolidated remote access and control. Its key features meet the needs of today's IT and lab administrators:

- Secure, single sign-on to a single IP address for managing all of Raritan's Dominion<sup>®</sup> series KVM, serial and intelligent PDU solutions
- Single point of access to physical servers (including blade systems), virtual machines and VMware<sup>®</sup> infrastructure such as the ESX/ESXi server and vCenter<sup>™</sup> environments
- Centralized, role-based, user access policy management
- Flexible user access, including the HTML Access Client interface, Administration Client, Mobile KVM Client for smartphone or tablet PC access and Java-free KVM access with the HTML and Active KVM Clients
- Supports remote access and power control through service processors and IP tools — including HP<sup>®</sup> iLO, Dell<sup>®</sup> DRAC, IBM<sup>®</sup> RSA II and IMM, IPMI, RDP, VNC, SSH and Telnet, as well as Web browser applications
- Virtual media support to load software and remote booting
- Consolidated logging and audit trail, including detailed activity reports

CC-SG directly provides remote power control for Raritan PX PDUs and also integrates with Power IQ<sup>®</sup> for remote power control of Raritan and third-party devices managed by Power IQ. And easy CC-SG/Power IQ synchronization significantly reduces data administration.

### COMMANDCENTER SECURE GATEWAY

Centralized access and control of your entire IT or lab infrastructure. CC-SG is available as a hardware or virtual appliance, with the following versions:

#### CC-E1 Hardware Appliance

- 2U form factor
- Dual power supplies

#### CC-V1 Hardware Appliance

- 1U form factor
- Single power supply

#### VMware Virtual Appliance

- Runs on ESX and ESXi

#### Hyper-V Virtual Appliance

- Windows Server 2008 & 2012

#### XEN Virtual Appliance

- XenServer 6.x

### INTUITIVE MENUS AND EASY REPORTING

- The simple and intuitive "node view" allows users to easily identify and access any target system or device through a variety of interfaces, including in-band tools and out-of-band KVM switches and serial console servers
- Comprehensive reporting capabilities — everything from usage and auditing to assets and nodes

# CORE FEATURES TO HELP YOU MANAGE BETTER

## ROBUST SECURITY

- Low security profile, Linux®-based appliance architecture
- Powerful policy management allows access and control based on a broad range of user-customizable criteria
- Secure 256-bit AES encryption for end-to-end node access
- Support for a broad range of authentication protocols, including LDAP, Active Directory®, RADIUS and TACACS+
- Security updates and hardening; immune to the Heart-bleed, Poodle, Freak and Shellshock vulnerabilities
- Ability to import user groups from Active Directory servers for user authentication
- Support for two factor authentication with SecurID® on RADIUS servers
- IP-based access control lists (ACL), which grant or restrict user access by IP address
- Proxy mode for secure access to devices through firewalls/VPNs
- Strong user password authentication, SAS 70 compliance for configurable failed login attempts and user lockout

## COMMANDCENTER SECURE GATEWAY

Secure, Centralized Remote Access and Control of your IT or Lab Infrastructure

### Out-of-Band KVM and Serial Access



#### Raritan Dominion Solutions

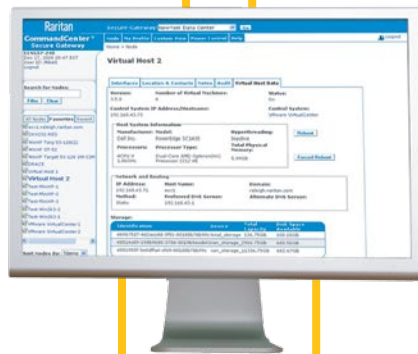
- KX III, SX II, KSX II, KX2-101-V2 Rackmount and blade servers Network and serial devices
- Raritan Intelligent PDUs

### Remote Power Control

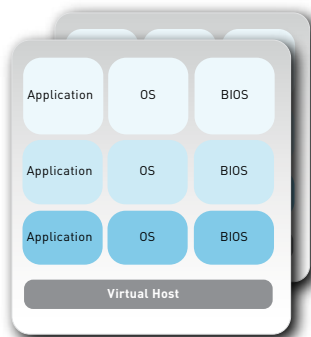


#### Power IQ Integration

- Direct Control of PX, PX2 & PX3
- PIQ Monitoring Software Integration



### Virtual Machines



VMware

### In-Band Data Center Access Solutions



#### IP Tools

- RDP
- VNC
- SSH
- Telnet
- Web Browser

#### Service Processors

- iLO
- DRAC
- RSA
- IPMI
- IMM

# SECURE, CENTRALIZED ACCESS AND CONTROL

## INTEGRATED VMWARE VIRTUALIZATION SUPPORT

- Consolidated access to physical and virtual servers, including centralized audit and reporting
- Intuitive virtualization discovery function allowing import and configuration of a virtual environment
- Configurable RDP, VNC or SSH application selection with single sign-on capabilities
- Simple virtual machine, virtual host server and vCenter information layout with relevant data

## HIGH AVAILABILITY AND REDUNDANCY

- Clustered hardware appliances delivers simple redundancy through primary and secondary CommandCenter Secure Gateway appliances
- Hot-swappable RAID memory setup, dual hard drives and dual power supplies
- "Neighborhood" configuration allows for a collection of up to 10 CC-SG units
- Leverage VMware's Fault Tolerance feature for easy-to-use, cost effective high availability

## SCALABLE AND FLEXIBLE REMOTE ACCESS

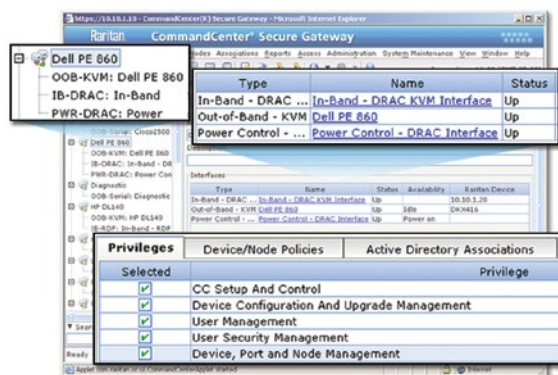
- In-band access methods like RDP, VNC, Telnet and SSH
- SSH support for CLI access to serial targets connected to Dominion SX and KSX II

## EASE OF MANAGEMENT FOR ADMINISTRATORS

- Easy CSV import/export feature enables convenient entry of CC-SG data, such as categories and elements, nodes and interfaces and user/user groups
- Guided setup of user group and security policies
- Back up, copy and restore Raritan device configurations
- Syslog and SNMP support
- Raritan KVM, serial and power device discovery with device availability status, health updates and alarms for Dominion series
- Easily configure individual user access policies to Universal Virtual Media™ on supported devices
- Central storage of firmware for Raritan KVM and serial switches for convenient bulk editing updates
- Task and notification managers to schedule tasks and review status

## JAVA-FREE ACCESS FOR USERS

- Intuitive and simplified view for remote access and power control from one screen
- Secure chat feature allows users to troubleshoot problems collaboratively
- Easy-to-use, feature-rich HTML client
- Java-free KVM access for Windows, Linux and Mac



## ONE VIEW OF THE ENTIRE ENTERPRISE

- Simplified, one-click access
- Consolidated access and power control on a single screen
- Sophisticated policy management with granular privileges

## HARDWARE APPLIANCE SPECIFICATIONS



CC-E1 shown

Features	V1	E1
Form Factor	1U	2U
Dimensions (DxWxH)	7.3" x 24.2" x 1.75"; 615 x 400 x 44 mm	17.3" x 27.5" x 3.5"; 699 x 440 x 89 mm
Weight	23.8 lbs; 10.8 kg	44.1 lbs; 20 kg
Power	Single Power Supply (1 x 350 watt)	Dual Supply (2 x 520 watt)
Operating Temperature	10°-35° C; 50°-95° F	10°-40° C; 50°-104° F
Mean Time Between Failure (MTBF)	36,385 hours	53,564 hours
KVM Admin Port	DB15 + USB Keyboard/Mouse	DB15 + PS/2 or USB Keyboard/Mouse
Serial Admin Port	DB9	DB9
Console Port	4 x USB 3.0 Ports (2 rear, 1 Type-A, 1 via header) 6 x USB 2.0 Ports (2 rear, 4 via header)	2 x USB 2.0 Ports
<b>Hardware</b>		
Processor	Haswell 2C Core i3-4330 3.5G 4M 5GT/s DMI	Intel® Core™ i7-860
Memory	4GB DDR3-1600 2Rx8 ECC Un-Buffer LP PB-Free x2	8 GB
Network Interfaces	2 x Gigabit Ethernet LAN Ports	(2) 10/100/1000 Eth. (RJ45)
Hard Disk & Controller	2 x 3.5" 1TB SATA 6Gb/s 7.2K RPM 64M RE4	(2) 300 GB SATA @ 10,000 rpm, RAID 1
CD-ROM Drive	DVD-ROM	DVD-ROM
<b>Remote Connection</b>		
Protocols	TCP/IP, UDP, IPv4/IPv6, RADIUS, LDAP, TACACS+, SNMPv3, SMTP, HTTP, HTTPS	
Warranty	Two years with advanced replacement*, Guardian® extended warranty also available	
Software Maintenance	One year maintenance free with purchase Additional years can be purchased Software updates available with maintenance	

## VIRTUAL APPLIANCE SPECIFICATIONS

### VMware Virtual Appliance

- ESX/ESXi 5.0, 5.1, 5.5, 6.0
- 2 GB Memory, 40 GB Disk
- Microsoft Windows Server 8 or 12

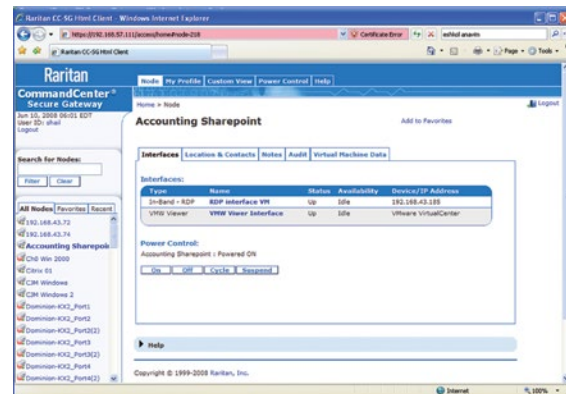
### Hyper-V Virtual Appliance

- Microsoft Windows Server 8 or 12
- 2 GB Memory, 40 GB Disk

### XEN Virtual Appliance

- XenServer 6.2
- 2 GB Memory, 40 GB Disk

## VIRTUAL MACHINE ACCESS



Stay connected to virtual servers even when they are moved from one virtual host to another. Issue on, off, cycle or suspend virtual power commands using the control buttons.

Visit [www.raritan.com/ccsg](http://www.raritan.com/ccsg)  
or Call 1.800.724.8090 for more information.

©2016 Raritan Inc. All rights reserved. Raritan® is a registered trademarks of Raritan Inc. or its wholly-owned subsidiaries. All others are registered trademarks or trademarks of their respective owners. Raritan began developing KVM switches for IT professionals to manage servers remotely in 1985. Today, as a brand of Legrand, we are a leading provider of intelligent rack PDUs. Our solutions increase the reliability and intelligence of data centers in 9 of the top 10 Fortune 500 technology companies. Learn more at [Raritan.com](http://Raritan.com) V1084R12

**Raritan**  
A brand of **Legrand**