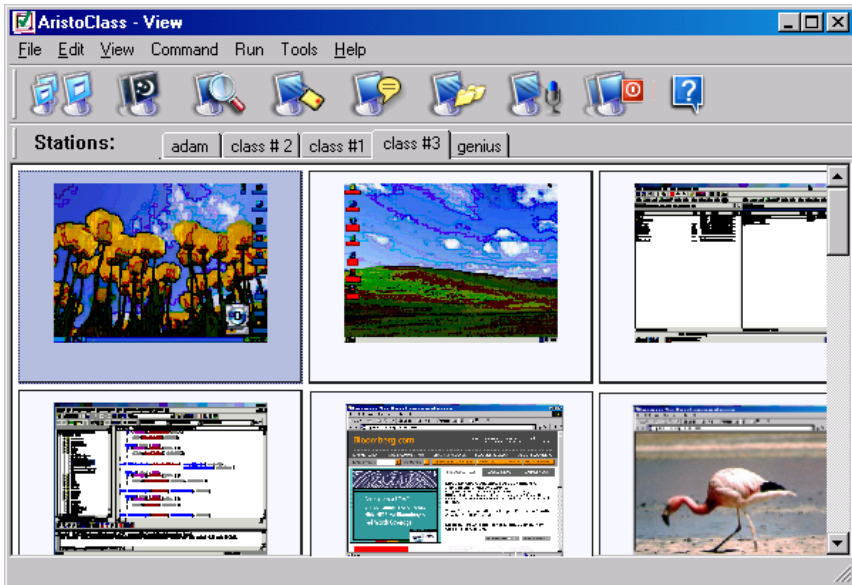


# AristoClass™

## User Guide



---

---

### International HQ

Jerusalem, Israel  
Tel: + 972 2 535 9666  
minicom@minicom.com

### North American HQ

Linden, New Jersey  
Tel: + 1 908 4862100  
info.usa@minicom.com

### European HQ

Dübendorf, Switzerland  
Tel: + 41 1 823 8000  
info.europe@minicom.com

### Italy

Rome  
Tel: + 39 06 8209 7902  
info.italy@minicom.com

# Table of Contents

Introduction .....	3
System Requirements.....	4
1. Teacher computer.....	4
2. Student computer .....	4
3. Network requirements.....	4
4. Graphic and Audio requirements.....	4
Installing the AristoClass software .....	5
5. Pre-installation guidelines .....	5
6. Installing AristoClass on the teacher computer.....	5
7. Installing AristoClass on student computers .....	5
8. Installing from the CD.....	6
9. Using the Deploy Wizard.....	6
Getting started .....	7
10. Setting up groups of student stations.....	7
11. Forming a new group .....	8
12. Editing an existing group.....	9
13. Station appearance options.....	9
14. Find / Find next .....	9
15. Loading / saving class layouts .....	9
Using the AristoClass functions.....	10
16. Choosing a target .....	10
The toolbar icons .....	11
17. Projecting the teacher's screen .....	11
18. Projecting the screen with/without audio.....	12
19. Ending projection .....	12
20. Darkening screens.....	13
21. Viewing a screen.....	13
22. Toolbar buttons.....	14
23. Sending a message .....	14
24. Chatting textually.....	15
25. Saving a Chat file log.....	15
26. Distributing files.....	15
27. Silent file transfer.....	16
28. Transmitting the teacher's voice.....	17
29. Shutting down stations .....	17
30. The System tray shortcut menu .....	17
31. Refreshing the station icons .....	17

<b>The Command and right-click menus .....</b>	<b>18</b>
32. Send Screen .....	18
33. Dark Station.....	18
34. Block Station .....	18
35. View station .....	18
36. Screen to Selected.....	19
37. Voice / Chat options .....	19
38. Send Message to.....	20
39. Shut down, Restart or Log off stations .....	20
40. Wake up stations .....	20
41. Activity Log .....	20
42. Internet Manager .....	21
43. Login Request.....	23
44. Refresh Thumbnail .....	23
<b>The Run menu .....</b>	<b>24</b>
45. Setting up resource applications .....	24
46. Setting up non-resource applications or particular files.....	24
47. Displaying the application .....	25
48. Running an application .....	25
49. Organizing the Run applications.....	25
50. Share Internet Explorer .....	26
<b>The Tools menu .....</b>	<b>27</b>
51. Distributing files to stations .....	27
52. Collecting files from stations .....	27
53. Activity Log .....	27
54. Internet Manager .....	27
55. Check for Updates .....	28
56. Digital board .....	28
57. Options .....	28
58. Network.....	28
59. Video .....	29
60. Thumbnails .....	30
61. Stations.....	30
62. Miscellaneous .....	31
63. Remote.....	32
64. Personal.....	33
65. Hardware.....	33
66. Multi-classes and teachers on a network.....	33

## Introduction

AristoClass is a revolutionary way of controlling a computerized environment. AristoClass gives a tremendous amount of interaction between all the connected parties. AristoClass is the perfect solution for educational establishments, large and small corporate enterprises, and government or military institutions.

With AristoClass you can:

- Remotely control student workstations.
- Darken students' screens to grab their attention.
- Monitor multiple students' screens simultaneously.
- Demonstrate hands-on by projecting the teacher's screen to student computers.
- Transmit Audio to students independently or while projecting a screen.
- Voice chat (Full duplex Intercom) with a student independently or while projecting a screen.
- Chat textually.
- Transfer student screens in real time.
- Send messages.
- Send and collect files.
- Remotely run student applications.
- Emphasize points on the screen with a Digital board.
- Monitor active applications to see exactly what students are doing.
- Have multiple classes and teachers in large organizations.

# System Requirements

Set out below are the requirements needed to run AristoClass.

## 1. Teacher computer

Pentium III – 700 MHz or higher with:

- Windows 98, 2000, 2003, NT4, Me or XP.
- 128 MB RAM or higher recommended.
- 10MB free Hard disk space
- 10/100-BASE-T Network card.

## 2. Student computer

Minimum Pentium II - 450MHz or higher with:

- Windows 98, 2000, 2003, NT4, Me or XP.
- 128 MB RAM or higher recommended.
- 10/100-BASE-T Network card.

## 3. Network requirements

- TCP/IP Protocol.
- 10/100-BASE-T Hub, Network switch recommended

If the network is properly configured then AristoClass will work, if the network is not configured properly then your System Administrator should configure the network, including the TCP/IP protocol.

## 4. Graphic and Audio requirements

For all computers:

- Any graphic adapter supported by Windows
- Windows compatible Sound card
- Microphone and speakers or headphones

## Installing the AristoClass software

The AristoClass CD contains the setup program for the teacher and students. The following sections explain how to install the AristoClass software.

### 5. Pre-installation guidelines


The AristoClass Teacher program detects all computers on the network and sub-network that have the student software installed. Therefore ensure that:

- The Network is properly configured and running
- All computers are switched on

### 6. Installing AristoClass on the teacher computer

To install the teacher program on the teacher's computer:

1. Insert the CD. The installation program should appear on the screen. Follow the instructions choosing Master when prompted. If the installation program does not appear, follow steps 2-6 below.
2. Click **Start**, and choose **Run**. The Run Dialog box appears.
3. Click **Browse** to locate the CD drive.
4. Double click **setup.exe**.
5. Click **OK**. The setup process begins. When prompted, choose to install the Teacher program.
6. Click **Next** and **Finish** to install the default settings. The computer

reboots automatically and a shortcut icon  appears on the desktop.

### 7. Installing AristoClass on student computers

There are 2 ways of installing AristoClass on student computers:

- Installing from the CD onto each computer
- Only for Windows XP, 2000 and later - Using the Deploy Wizard

## 8. Installing from the CD

To install the student program on each computer, follow the same steps as when installing the teacher software. When prompted, choose to install the Student program.

## 9. Using the Deploy Wizard

Use the **Deploy Wizard** for Windows XP, 2000 and later to install the software onto any computer connected to the same Network. To use the Deploy Wizard you must have Administrator rights on all computers.

From the teacher computer that already has AristoClass installed, do the following:

1. Choose Start/Programs/AristoClass/Deploy. The Deploy Wizard window appears. See Figure 1.

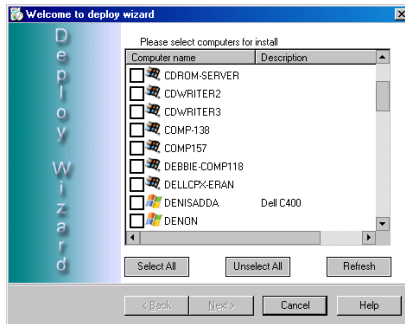


Figure 1 The Deploy Wizard window

2. Check the boxes next to the names of the computers you wish to install AristoClass on, and click **Next**.
3. Locate the AristoClass **setup.exe** file and install it on all selected computers.

## Getting started

Run the Teacher program by clicking the AristoClass icon in the System tray. The AristoClass View window appears. See Figure 2.

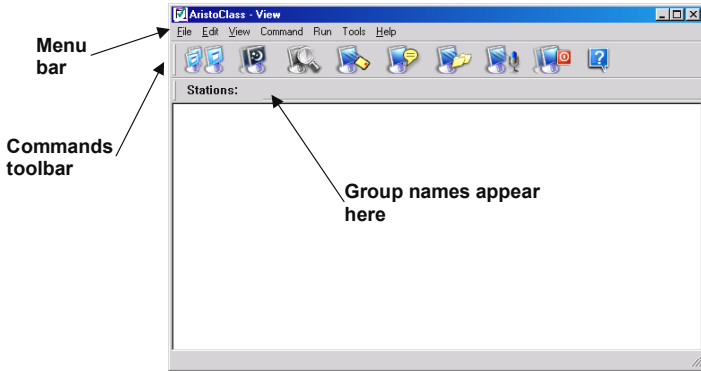


Figure 2 The AristoClass View window

### 10. Setting up groups of student stations

Set up groups of student stations to appear in the **AristoClass** View window. The teacher monitors and controls these groups.

To set up a group:

1. From the **Tools** menu select **Options**.
2. Press the **Stations** tab, the following box appear. See Figure 3. This is where groups of stations are listed and where new groups are made. Also existing groups can be edited.

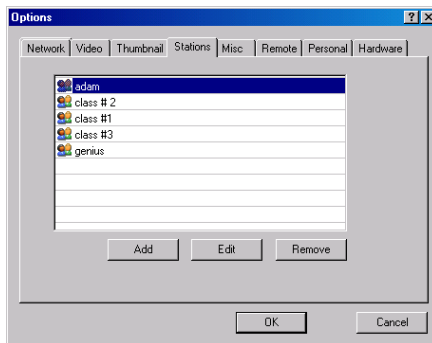


Figure 3 Stations options box



## 11. Forming a new group

To form a new group of stations:

1. Click . The Select Stations box appears. See Figure 4.

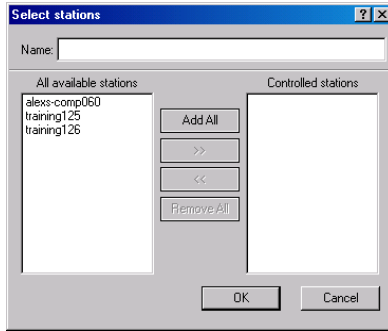

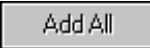


Figure 4 The Select Stations box

2. Type a name for the new group in the **Name** box, e.g. Class 1.
3. Highlight the desired stations in the **All available stations list**. This list contains the names of all switched on computers on the network that have the AristoClass student software installed.
4. Press  or  to transfer the desired stations to the **Controlled stations** lists.
5. Click **OK**. The new group appears in the Stations options box and also as a tab below the Toolbar icons on the AristoClass Main window.
6. Click the tab to display the group in the View window. See Figure 5. The stations appear with the computer name below each one.

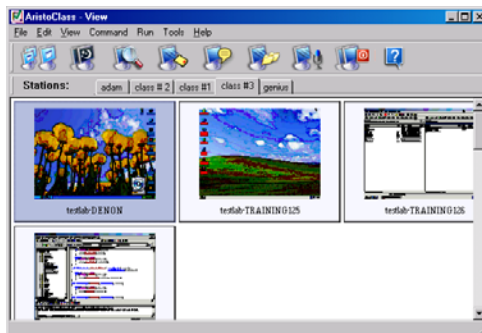



Figure 5 The View window displaying a group

## 12. Editing an existing group

To edit an existing group:

1. From the Stations options box, highlight the desired group and click . The Select Stations box appears.
2. Make the desired changes and click **OK**.

## 13. Station appearance options

The stations can be displayed in different styles. From the **View** menu choose between thumbnails, icons or as a list. The thumbnails and icons can be different sizes.

**Note!** Only as thumbnails can you see the station screens in miniature.

**Note!** Only in icon view you can also display offline stations.

## 14. Find / Find next

From the **Edit** menu use the **Find/Find next** features to search for a station by typing one or more letters of the station name.

## 15. Loading / saving class layouts

When stations appears as icons, you can move and organize them on the screen. Save these layouts for future use.

To save a layout:

From the **File** menu click **Save class layout**. The Save box opens. Save in an appropriate place.

To load a layout:

1. Ensure that the appropriate group is selected from the Group tab.
2. From the **File** menu click **Load class layout**. The layout loads.

## Using the AristoClass functions

The AristoClass functions are performed from the toolbar icons, or from a number of different menus as explained below.

Activating a function involves the following 2 steps:

1. Choosing a target.
2. Selecting the desired function.

### 16. Choosing a target

The target could be:

- One or more stations
- All stations

To select 1 station:

Click the desired Station/thumbnail/icon.

To select more than one station:

Press and hold **Ctrl** and click the desired Station/thumbnail/icon.

To select all stations:










Press **Ctrl+A**.

Or

Leave all stations unselected.

## The toolbar icons

The table below sets out the toolbar icons and their functions. These are explained in detail below.

Icon	Function
	Projects the teacher's screen to 1 or more stations. Press again to deactivate
	Darken / un-darken 1 or more screens
	View a single station's screen
	Send a message to 1 or more stations.
	Chat textually with 1 or more stations
	Distribute files to 1 or more stations
	Transmit Audio to 1 or more stations
	Shut down 1 or more stations
	Help


### 17. Projecting the teacher's screen

Project the teacher's screen to 1 or more stations. Project the screen alone or with audio.

To project the teacher's screen:

1. Select the target stations.



2. Click . The teacher's screen projects to the stations. A Screen icon appears on each targeted station thumbnail.

## 18. Projecting the screen with/without audio

To activate/deactivate the audio signals:

1. From the Menu bar choose Tools/Options. Click the Video tab. The Video options window appears. See Figure 6.

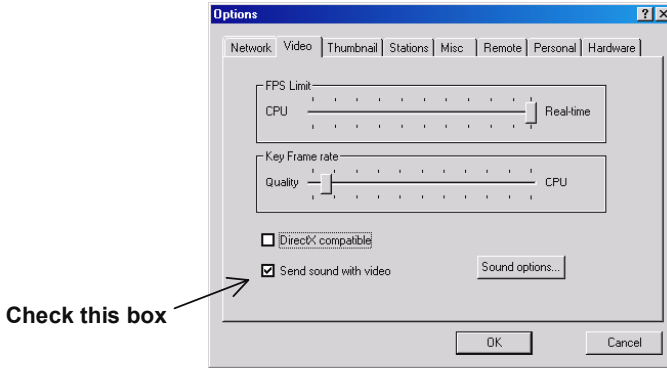


Figure 6 The Video option s window

2. Check/uncheck **Send sound with video**.
3. Click **OK** to save and exit.

## 19. Ending projection

1. Select the target stations.

2. Click .

### Note!

To cancel all presently running functions: from the Menu bar choose Commands/Cancel commands.

## 20. Darkening screens

To darken screens:

1. Select the target stations.

2. Click  .

To un-darken screens:

1. Select the target.


2. Click  .

## 21. Viewing a screen

View a single station's screen.

To view a screen:

1. Select the target station.

2. Click  or double-click the target station. **AristoClass** minimizes and the station's screen appears.

See Figure 7.

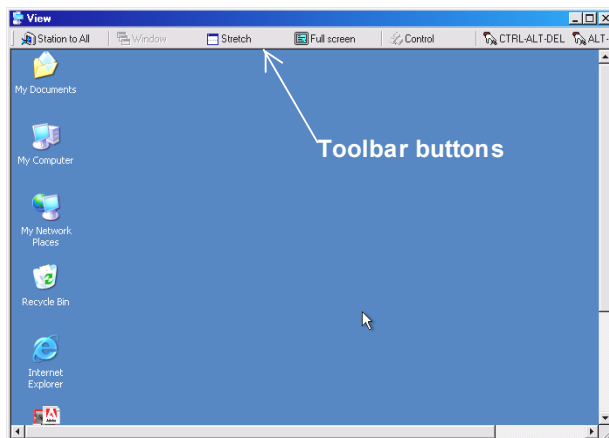











Figure 7 The viewed screen

## 22. Toolbar buttons

When viewing a screen, you can do the following with the Toolbar buttons:


Button	Function
 Station to All	Transmit the viewed screen to all stations or all stations selected from the AristoClass View window
 Window	Viewed screen is full size inside a window. Scroll bars appear
 Stretch	Entire viewed screen appears in a window
 Full screen	When both systems have the same screen resolution, the viewed screen takes up the full screen area.
	2 buttons appear on the screen. Press  to put the viewed screen into a window. Press  to take keyboard and mouse control
 Control	Take full keyboard and mouse control of viewed station
 CTRL-ALT-DEL	Simulates pressing Ctrl+Alt+Del on viewed computer
 ALT-F4	Simulates pressing Alt+F4 on viewed computer

## 23. Sending a message

To send a message:

1. Select target.




2. Click . The Message window appears.
3. Write a message.
4. Click **Send**. The message appears on the stations' screen.

## 24. Chatting textually

Chat textually with one or more students. The chat can be read by the teacher only or by all targeted stations.

To start a chat session:

1. Select target stations.
2. Click the  button. The Chat box opens on the teacher and station screens.
3. Type text.
4. Press **Send**. The teacher's text goes to all targeted stations.
5. Text from the students can be sent:
  - Only to the teacher

Or

- To the teacher and all other targeted stations

To send the text to the other targeted stations:

From the Options menu check **Group chat**.

To send the text only to the teacher:

From the Options menu uncheck **Group chat**.

To end Chat:

From the Options menu click **Close Chat**. Students cannot close the Chat window.

## 25. Saving a Chat file log

To save a Chat file log:

From the **File** menu click **save log**. Choose a name and save the file.

## 26. Distributing files

Distribute files to 1 or more stations. The file goes to the stations Shared folder. By default this folder is C:\download. You must set up a guest account with Administrator rights on all computers. Enable sharing of the folder.



To change the Shared folder:

1. Choose Tools/Options.
2. Select the Remote tab. The Remote options window appears. See below.

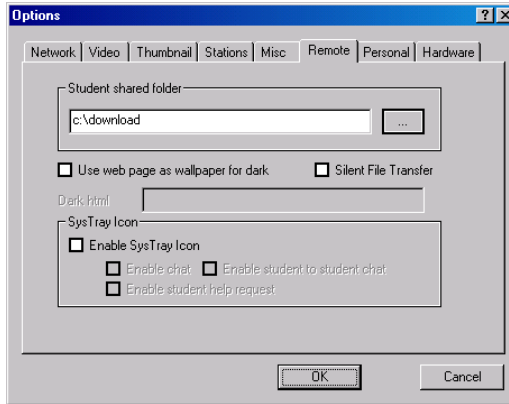



Figure 8 The Remote options window

3. Browse the folders to change the Student Shared folder.
4. Click OK.

To distribute files:

1. Select the target stations.



2. Click . The Open box appears. Locate the desired file and click open. The file is sent.

## 27. Silent file transfer

By default, when files are distributed they appear on the station Desktop. You can send the files to the shared folder without them appearing on the Desktop.


To do so:

In the Remote options window - Figure 8 above - Check Silent File Transfer.

## 28. Transmitting the teacher's voice

Transmit the teacher's voice to 1 or more stations. This can be done independently or while for example projecting a screen.


To broadcast the teacher's voice:

1. Select target stations.
2. Click . Microphone icons appear on the teacher's screen.
3. Speak into the microphone.

To end the transmission, click .

## 29. Shutting down stations

To shut down stations:

1. Select the target stations.
2. Click . The stations shut down.

## 30. The System tray shortcut menu

Right-click the **AristoClass** icon in the System tray. A menu with shortcuts to the most common functions appears. See Figure 9. Use these shortcuts to save time. View in this menu opens AristoClass.

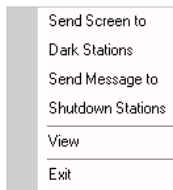


Figure 9 Shortcut menu

## 31. Refreshing the station icons

From the **View** menu press Refresh to show any changes instantly. Or click the group name tab to refresh screens.

## The Command and right-click menus

For the **Command** menu first select target stations. From the Menu bar, click **Command**. The Command menu appears.

**Station right-click menu** - Right-click an individual station, a menu appears. From this menu you perform functions with that individual station.

The functions set out below can be performed from the **Command** menu or the station right-click menu or both, as indicated.

**Canceling functions!** To cancel any of the functions below:

From the menu, click **Cancel**.

You can perform the following functions from the menus:

### 32. Send Screen

To send the teacher's screen to a station:

From the menu click **Send Screen**. The teacher's screen appears on the target station.

### 33. Dark Station

To darken the station:

From the menu, click **Dark Station**.

### 34. Block Station

To block the station computer without darkening the screen:

From the menu, click **Block Station**.

### 35. View station

To view the station:

From the menu, click **View station**.

### 36. Screen to Selected

To transmit one station's screen to other stations (**Right-click menu only**):

1. Select the stations to which you want to send the screen.
2. Right-click the station you want to transfer the screen of.

**Note!** When viewing stations as icons, you must press **Ctrl** and select this station before opening the right-click menu.

3. Click **Screen to Selected**. The screen broadcasts. Screen icons appear on the teacher's screen.

**Note!** To simultaneously transmit Audio, enable **Send sound with video**, as explained in section 18 on page12.

### 37. Voice / Chat options

There are a number of different Voice / Chat options as follows:

To send the teacher's voice to 1 or more stations:

1. Select the stations to which you want to send the audio.
2. From the **Command** menu select **Send Teacher Voice**. Microphone icons appear on the teacher's screen.

To chat (full duplex) with a single student:

1. Open the Right-click menu of the desired station.
2. Select **Talk with Student**. A Microphone icon appears on the teacher's screen.

To enable 2 students to chat (full duplex):

1. Hold down the **Ctrl** key and select the 2 stations.

**Important!** Keep the **Ctrl** key pressed throughout this operation.

2. Right-click either station. Click **Station to Station Voice**. Microphone icons appear on the teacher's screen.

To enable random students to chat (full duplex):

Follow the 2 steps above, selecting 4 or more stations. When selecting an odd number of stations, one of them will be excluded from the chat.

### 38. Send Message to

To send a message to the station:

From the menu, click **Send Message to**. Write a message and send.

### 39. Shut down, Restart or Log off stations

To shut down, restart or log off the station:

From the menu, click the appropriate line. The station responds accordingly.

### 40. Wake up stations

This feature powers up stations that have Wake on LAN hardware support.

In Thumbnail view offline stations are not displayed so **Wake Up Stations** appears in the **Command** menu only.

In Icons view, you have the option to display offline stations, see page 9. You can select one or more offline stations and right-click to get the command.

### 41. Activity Log

Monitor student computer activity with the Activity Log. (**Right-click menu only**).

From the menu, click **Activity Log**. The Application Activity window appears. See Figure 10.

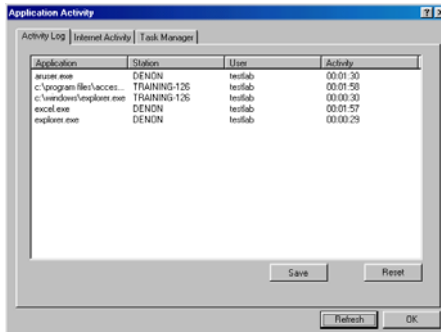


Figure 10 The Application Activity box

This box shows all applications used in the current session.

To clear this list, click **Reset**. To save this list click **Save**. Save it as a text file.

To refresh the list click **Refresh**.

## Internet Activity

Click the **Internet Activity** tab to see all the Web site visited during the current session.

To clear this list, click **Reset**. To save this list click **Save**. Save it as a text file. To refresh the list click **Refresh**.

## Task Manager

Click the **Task Manager** tab to see all the applications and services running.

To refresh the list click **Refresh**. To save this list click **Save**. Save it as a text file.

To terminate an application:

1. Select the application.
2. Click **Terminate**.

**Warning!** Do not terminate an unfamiliar running service as this could crash the computer(s)!

## 42. Internet Manager

Limit the Web sites that the stations can access. (**Right-click menu only**).

To do so:

From the menu, click **Internet Manager**. The **Internet Access Control** box appears. See Figure 11.

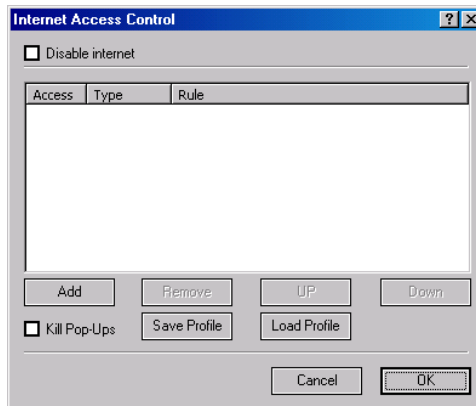


Figure 11 The Internet Access Control box

The following options are available:

**Disable Internet**

Completely disable Internet use.

**Add**

To block access to a particular IP/URL/part of a URL:

1. Click . The Add box appears. See Figure 12.

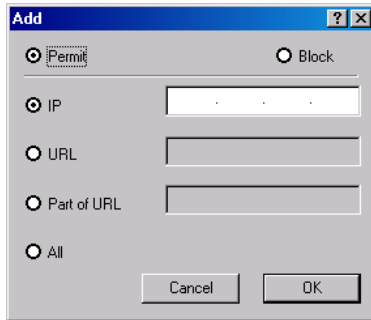
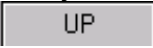


Figure 12 The Add box

2. Choose **Block**.
3. Choose IP/URL/part of a URL and write in the desired address.

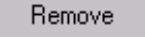
To allow access only to a particular IP/URL/part of a URL specify the address and then block access to the rest of the Internet as follows:

1. In the Add box Choose **Permit**.
2. Choose IP/URL/part of a URL and write in the desired address.
3. Click **OK**. The address appears in the Internet Access Control box list.
4. Reopen the **Add** box and choose **Block** and check **All**.
5. Click **OK**. The block appears in the Internet Access Control box list.

Add further addresses as needed. The list is in order of priority. So addresses that appear after the block will not be accessed. Use the  button to move accessible addresses before the block.

## Remove

To remove an address:

Select the desired address and click .


## Kill Pop ups

Check to disable pop ups.

## Save / Load profile

Save a profile of access options for future use.

To save a profile:

Click  and save it in an appropriate place.

To load a profile:

Click  and locate the appropriate profile.

## 43. Login Request

To request a station to login:

From the menu, click **Login Request**. The Login box appears on the station's screen. See Figure 13.



Figure 13 The Login box

The student types his User Name and logs in. This name appears below the screen thumbnail. The student can also type in his email address. Click

 to get a space for the email.

## 44. Refresh Thumbnail

To refresh the thumbnail:

From the menu, click **Refresh Thumbnail**.



## The Run menu

The following functions appear in the Run menu.

### 45. Setting up resource applications

1. Choose **Run/Add to Run**. The Add Application box appears. See Figure 14.

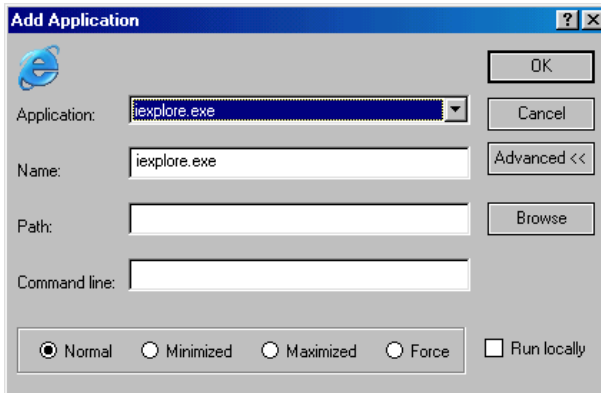


Figure 14 The Add Application box

2. From the Drop-down **Application** list select the desired application. The name automatically appears in the **Name** box.
3. Click **OK**. The application / file appears in the **Run** menu.

### 46. Setting up non-resource applications or particular files

1. When the desired application does not appear in the Drop-down list, press **Advanced <<** to see the full **Add Application** box.
2. Type or browse the name and full path of the application. (E.g. C:\Program files\Word\Word.exe). **The paths must be the same for all stations.**
3. To run a particular file, type the file path in the **Command line**.
4. Click **OK**. The application / file appears in the **Run** menu.

## 47. Displaying the application

From the bottom of the **Add Application** box choose to display the application in one of the following ways:

Mode	Appearance of Application
Normal	Normal on the station screens
Minimized	Minimized on the station screens
Maximized	Maximized on the station screens
Force	Application is the only program that the stations can work with
Run locally	Application also appears on the teacher computer

## 48. Running an application

To run an application/ file after it has been set up:

1. Select the targets.
2. From the **Run** menu click the application/ file.

## 49. Organizing the Run applications

To organize the Run applications:

1. From the Run menu choose **Organize Run**. The **Organize Applications** box appears. See Figure 15.

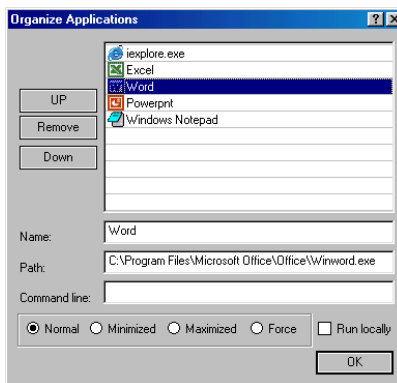


Figure 15 The Organize Applications box

2. From the list, move applications up or down or remove them. You can also choose how to display applications – see above. Click **OK**.

## 50. Share Internet Explorer

Open Internet Explorer on all stations. All stations display see the Web sites the teacher navigates to.

To open Internet Explorer on all stations:

From the Run menu click **Share Internet Explorer**.

## The Tools menu

The following functions appear in the Tools menu.

### 51. Distributing files to stations

Distributing files to stations is explained in section 26 on page 15

To send files to the shared folders:

1. Select the target stations.
2. Choose Tools/Send Files. The **Open** box appears.
3. Select the desired file and click **Open**. The file goes.

### 52. Collecting files from stations

Collect all files from the shared folder of selected stations.

To collect files:

1. Select the target stations.
2. Choose Tools/Collect Files. The **Browse for Folder** box appears.
3. Select a folder to which all files will go to. The files go to the selected folder. **Note!** Files automatically have the name of the station added to the file name.

### 53. Activity Log

This is discussed in detail in section 41 on page 20.

To use the Activity Log:

1. Select the target stations.
2. Select Tools/Activity Log. The Application Activity box appears. See page 20.

### 54. Internet Manager

This is discussed in detail in section 42 on page 21.

To use the Internet Manager:

Choose Tools/Internet Manager. The **Internet Access Control** box appears. See page 21.

## 55. Check for Updates

Click to check for updates of AristoClass on the Internet.

## 56. Digital board

Use the tools of the Digital board to delineate and color objects on the screen.

To close the Digital board:

Right-click the mouse and choose **Close**, or press Alt+F4.

## 57. Options

Click to get the following options:

## 58. Network

In the **Network** tab the following options appear. See Figure 16.

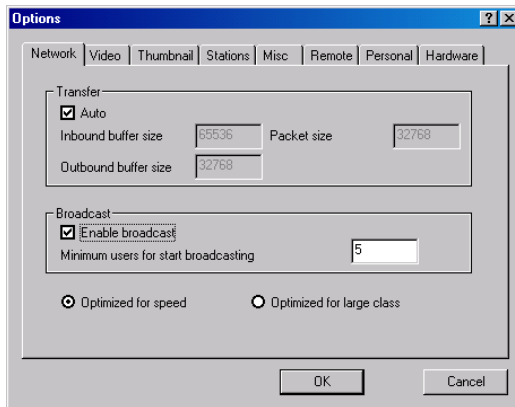


Figure 16 Network options

### Transfer

Choose between auto and manual buffer and packet size.

### Broadcast

Enabling broadcast increases the speed of information transfer but with reduced stability. Only recommended for stable networks.

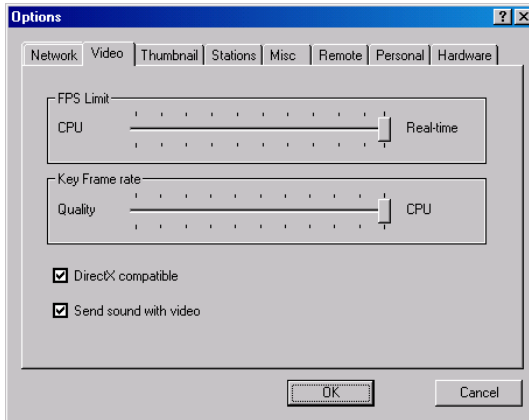
Minimum users to start using broadcast – recommended not less than 5.

### Optimized

Choose between optimizing for speed or for a large class.

## 59. Video

Press the **Video** tab, the following options appear. See Figure 17.



**Figure 17 Video options**

### **Frames per second / Key Frame Rate**

Choose the desired speeds.

### **Direct 3D enabled on stations**

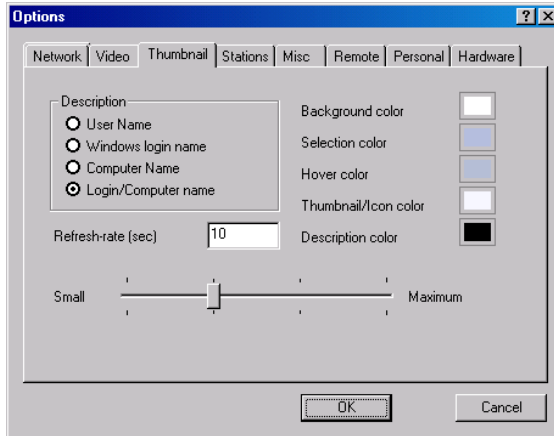
When AristoClass is running in the background check this option to allow programs, which use Direct 3D to run.

### **Send sound with video**

Discussed on page 12.

## 60. Thumbnails

Press the **Thumbnail** tab, the following options appear. See Figure 18.



**Figure 18 Thumbnail options**

### Description

Choose the information displayed below each stations thumbnail. By default the station screen appears with the computer name identifying it. The teacher may want to request a student to log in to identify the station screen with the student's own name (User Name).

### Colors

You can select different colors for each category.

### Refresh rate

Choose the automatic refresh rate in seconds. 10 seconds is high. With a slow system set it at 30-40 seconds.

### Size adjusting bar

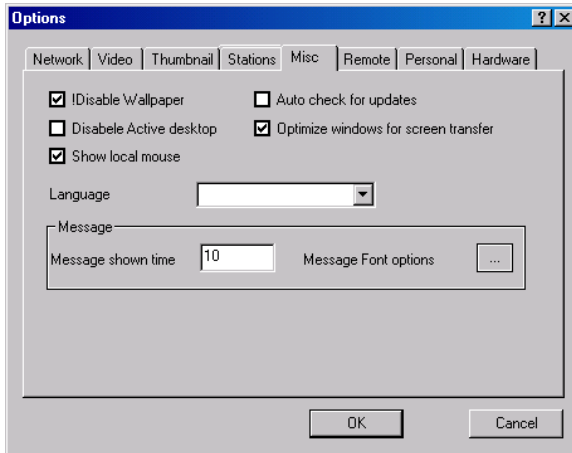
Use the adjusting bar to change the size of the station thumbnails. This can be done from the View menu also.

## 61. Stations

Discussed in section 10 on page 7.

## 62. Miscellaneous

Press the Misc tab, the following options appear. See Figure 19.



**Figure 19 The Misc box**

**Disable Wallpaper** - Disable the Wallpaper of the teacher and all stations.

**Disable Active Desktop** - Disables Active Desktop.

### Show local mouse

This option is relevant when taking control of a station. Check to show local (teacher) mouse and station cursor. When unchecked only the station cursor appears.

### Auto check for updates

When checked AristoClass automatically checks for updates when the computer is switched on.

### Optimize windows for screen transfer

Check this box to disable visual effects such as fade out etc.

### Language

Choose language.

### Message

When sending a message, choose how long it displays on the targeted screens in the **Message shown time** box. Choose the font and size in the **Message font options** box.



### 63. Remote

Press the **Remote** tab, the following options appear. See Figure 20.

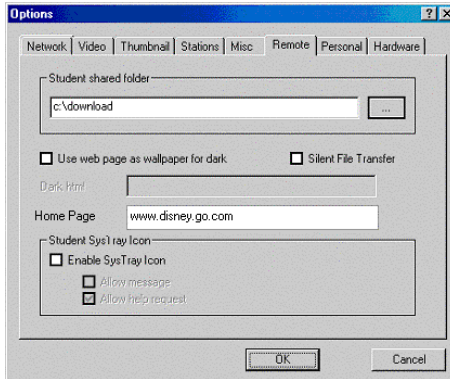


Figure 20 The Remote box

**Student shared folder** - Discussed in section 26 on page 15.

#### Use web page as wallpaper for dark

Instead of darkening station screens have a Web page appear. Check the option then type the address in the **Dark.html** box.

#### Home Page

Set a home page for all students Web browsers.

**Silent file transfer** - Discussed in section 27 on page 16.

#### Student System tray icon

Enable the AristoClass student station icons to send messages to the teacher and/or send a request for help.

When enabled the student right-clicks the AristoClass icon in the System tray to display a menu. See Figure 21.

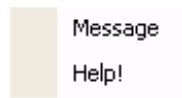


Figure 21 Student menu

#### Message

Click **Message** to display a Message box. The student writes and sends messages to the teacher.

## Help!

Click **Help!** to notify the teacher you need help. A Bulb icon appears on that students station on the teacher's screen.

## 64. Personal

Press the **Personal** tab, the following options appear. See Figure 22.

Write your name and email in the boxes provided.

### Password protection

Password-protect AristoClass. Type and confirm a password. The next time AristoClass is opened a password box appears.

The image shows a screenshot of the 'Options' dialog box in AristoClass, with the 'Personal' tab selected. The dialog box has a title bar with a question mark and a close button. Below the title bar is a tabbed interface with tabs for 'Network', 'Video', 'Thumbnail', 'Stations', 'Misc', 'Remote', 'Personal', and 'Hardware'. The 'Personal' tab is active and contains three sections: 'Personal Info' with 'Name:' and 'E-Mail:' labels and text input boxes; 'Login Info' with 'Password:' and 'Confirm password:' labels and text input boxes; and 'Class' with a 'Name' label and a text input box. At the bottom of the dialog box are 'OK' and 'Cancel' buttons.

Figure 22 The Personal box

### Class

Type the name of a class.

## 65. Hardware

The options in the Hardware tab are explained in the relevant Minicom hardware documentation.

## 66. Multi-classes and teachers on a network

AristoClass can be used on the networks of large institutions, with numerous classes being run by different teachers.

Also more than one teacher can have the same station in a class. When this happens the teachers can only perform functions that do not nullify functions currently activated by a different teacher. For example, if one teacher sends his screen to the student a second teacher cannot do the same.



