

iBoot



Web Enabled Remote Power Control

Table of Contents

<u>Important Safety Information</u>	2	<u>iBoot Setup</u>	13
<u>General Description</u>	3	Device Settings	
<u>Hardware Installation</u>	5	TCP/IP Settings	
Ethernet Connections		Auto-Ping	
A/C Power Connections		Heartbeat	
<u>iBoot Configuration</u>	8	Passwords	
Setting IP Address		Forgotten Password	
Using DHCP		<u>Advanced Operation</u>	16
Using Web Browser Access		Auto Ping	
Using ibootrst.exe		Heartbeat Monitor	
Using ARP / Ping		Control Programs	
<u>Web Browser Operation</u>	11	Direct TCP Control	
Password Protection		<u>Specifications</u>	22
Control & Status Page		<u>User Settings</u>	22
		<u>Tech Support & Warranty</u>	23
		<u>More Power Control Solutions</u>	24

Ver: 2.0 and up



11 Park Place / Paramus, NJ 07652
201-967-9300 www.dataprobe.com

IMPORTANT SAFETY INSTRUCTIONS

When using this product, basic safety precautions should always be followed to reduce the risk of fire, electric shock, and injury to persons, including the following:

1. Read and understand all instructions.
2. Follow all warnings and marked on the product.
3. Unplug this product from the wall outlet before cleaning. Do not use liquid cleaners or aerosol cleaners. Use a damp cloth for cleaning.
4. Do not use this product in an outdoor environment or near water, for example, near a bath tub, wash bowl, kitchen sink, or laundry tub, in a wet basement, or near a swimming pool.
5. Do not place this product on an unstable cart, stand, or table. The product may fall, causing serious damage to the product.
6. Slots and openings in this product and the back or bottom are provided for ventilation to protect it from overheating; these openings must not be blocked or covered. The openings should never be blocked by placing the product on the bed, sofa, rug, or other similar surface. This product should never be placed near or over a radiator or heat register. This product should not be placed in a built-in installation unless proper ventilation is provided.
7. This product should be operated only from the type of power source indicated on the marking label. If you are not sure of the type of power supply to your home, consult your dealer or local power company.
8. This product is equipped with a three wire grounding type plug, a plug having a third (grounding) pin. This plug will only fit into a grounding type power outlet. This is a safety feature. If you are unable to insert the plug into the outlet, contact your electrician to replace your obsolete outlet. Do not defeat the safety purpose of the grounding type plug. Do not use a 3-to-2 prong adapter at the receptacle; use of this type adapter may result in risk of electrical shock and/or damage to this product.
9. Do not allow anything to rest on the power cord. Do not locate this product where the cord will be abused by persons walking on it.
10. Do not overload wall outlets and extension cords as this can result in the risk of fire or electric shock.
11. Never push objects of any kind into this product through slots as they may touch dangerous voltage points or short out parts that could result in a risk of fire or electrical shock. Never spill liquid of any kind on the product.
12. To reduce the risk of electrical shock, do not disassemble this product, but take it to a qualified serviceman when some service or repair work is required. Opening or removing covers may expose you to dangerous voltages or other risks. Incorrect re-assembly can cause electric shock when the appliance is subsequently used.
13. Unplug this product from the wall outlet and refer servicing to qualified service personnel under the following conditions:
 - a) When the power supply cord or plug is damaged or frayed.
 - b) If liquid has been spilled into the product.
 - c) If the product has been exposed to rain or water.
 - d) If the product does not operate normally by following the operating instructions. Adjust only those controls that are covered by the operating instructions because improper adjustment of other controls may result in damage and will often require extensive work by a qualified technician to restore the product to normal operation.
 - e) If the product has been dropped or has been damaged.
 - f) If the product exhibits a distinct change in performance.
14. Avoid using a telephone (other than a cordless type) during an electrical storm. There may be a remote risk of electric shock from lightning.
15. Do not use the telephone to report a gas leak in the vicinity of the leak.
16. Do not exceed the maximum output rating of the auxiliary power receptacle.

SAVE THESE INSTRUCTIONS

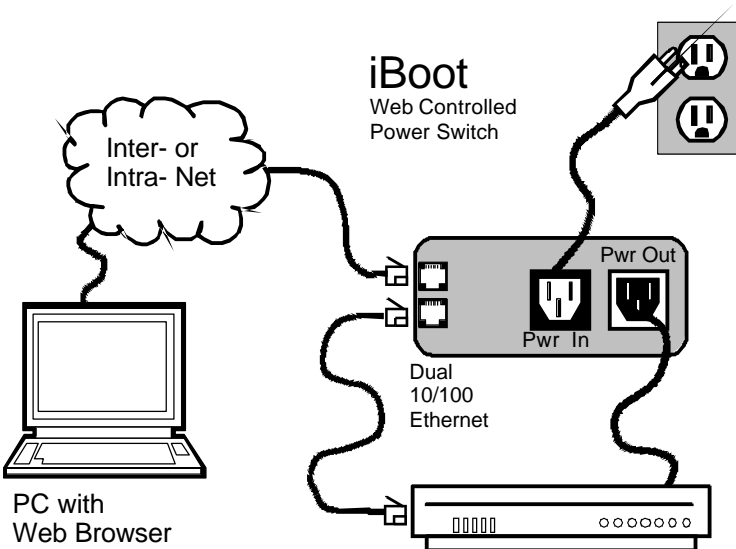
General Description

The iBoot is a network attached, IP addressed, Web Controlled AC power switch. Anyone with a web browser can access iBoot to perform power On, Off or Power Cycle (Reboot or Power Burst). iBoot is password protected for security.

iBoot features international standard IEC320 connections and is compatible with power mains worldwide. Dual Ethernet jacks with built-in hub make installation of iBoot easy.

Uses for iBoot:

- ◆ Remote reboot of any device, routers, servers, kiosks, etc. The device to be rebooted need not be network attached.
- ◆ Secure sensitive devices by keeping them powered off when not in use. This prevents hackers from seeing them at all times.
- ◆ Power down equipment when not needed for power savings and to save on wear and tear.
- ◆ Power up alert devices like sirens, lamps, messages; or control environmental system like heaters, coolers pumps, etc.



Multiple Control Options

In addition to the Web control capabilities, iBoot features several other means to operate automatically or under computer control. Each of these methods is detailed in the Advanced Operation section on page 16.

Auto-Ping: The Auto-Ping feature allows iBoot to automatically detect failed equipment and perform a timed reboot or other power control function (like turning on an indicator or siren). You set any IP address to be periodically Ping'ed. When iBoot no longer detects a response from the address, the programmed power control function is actuated.

Heartbeat Monitor: Like the Auto-Ping in reverse, this feature uses a periodic message sent to the iBoot from a device. When that message is not received, the iBoot will perform the programmed power control function.

iBoot Control Programs: Dataprobe offers two applications to simplify operation of the iBoot. The iBoot Control Program operates one iBoot from a command line or application. The iBoot Control Center allows control of multiple iBoots from one application, eliminating the need for multiple web pages. This also allows for simultaneous control of multiple iBoots and automation using time of day features.

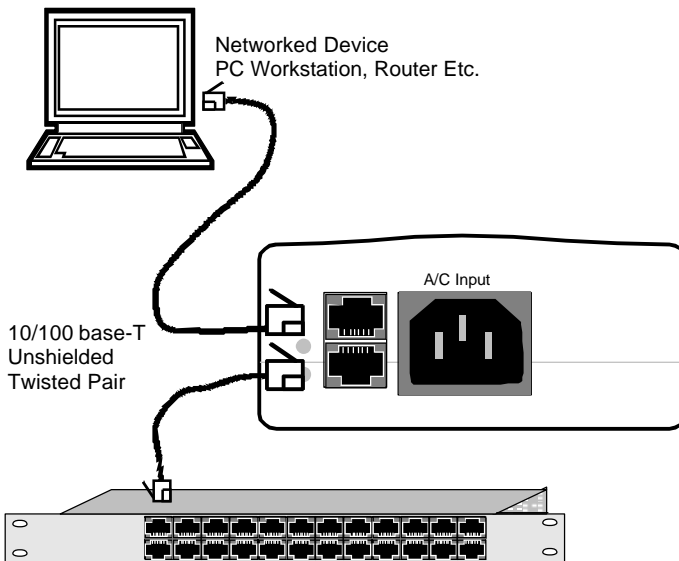
Direct TCP Control: iBoot can be controlled directly via messages sent via TCP. This feature allows programmers to add power control directly to their application and build automated scripts in any language to operate iBoot. The control protocol is downloadable from the Dataprobe website.

Hardware Installation

Ethernet Connections

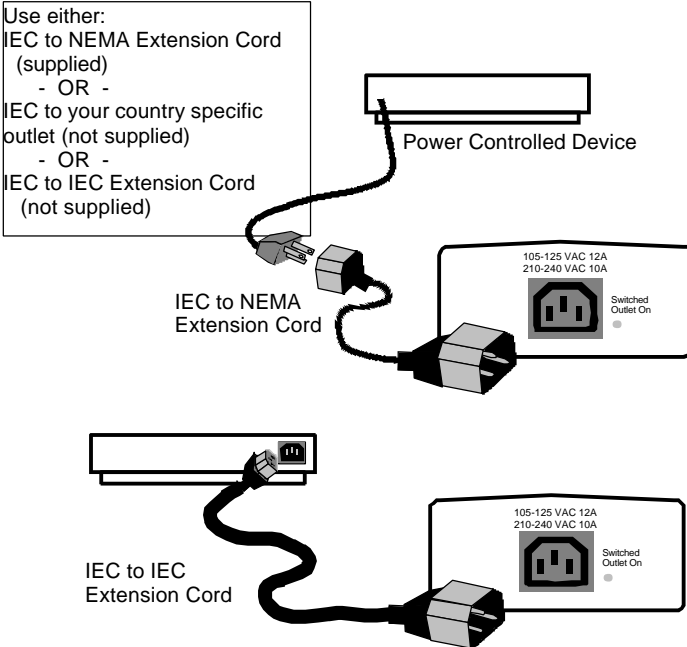
iBoot supports 10/100 Ethernet using unshielded twisted pair (Cat 5) cabling. Two network jacks, with built-in hub are provided. They are auto-sensing for 10/100 and Uplink/Downlink. A Link LED next to each indicates when the connection to the network is properly established. The built-in hub allows one cable from the wiring closet to be used for both iBoot and the device it is powering (or any other device). This greatly simplifies installation. Use of both network jacks is optional.

Note: iBoot supports DHCP. If your network uses a DHCP server, it will automatically assign an IP address when iBoot is first powered up on the network. If you do not use DHCP there are several other methods of assigning an IP address. Please read the Configuration Section on page 8 for more details.



AC Power Connections

Connect Device to be Powered to iBoot



Connect the device to be powered ON and OFF to the IEC receptacle marked **Switched Outlet**. A short IEC 320 to North American (NEMA 5-15) power cord is included for connecting the iBoot outlet to the device to be power controlled.

If a cord with a different terminating receptacle is required, be sure it is properly rated and meets all the required local electrical standards. If the device to be powered uses an IEC320 receptacle and detachable power cord, an IEC to IEC extension cord can be used.

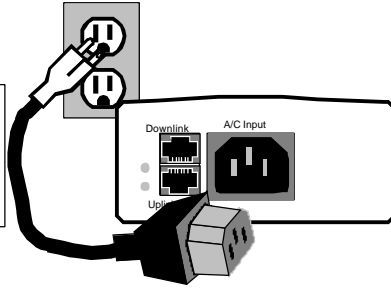
The iBoot can be connected to a power strip to allow simultaneous control of multiple devices.

Make sure that the combined load of all controlled devices does not exceed 12 Amps for 105-125VAC or 10 Amps for 210-240VAC.

An LED Indicator next to the Switched Outlet will be On to indicate that the power is On at that outlet. This LED will turn Off to indicate that the power to the switched outlet is Off.

Connect to Power Source

Use Included Cord for North America. For other locations, use locally approved power cord.



Connect the supplied power cord to the connector labeled **AC Input**, and the other end to your AC source. If a power cord with a different terminating plug is required, be sure it is properly rated and meets all the required local electrical standards.

iBoot Configuration

Setting I/P Address

Consult your Network Administrator to determine the appropriate IP address. The IP address can be set in any of four ways:

1. Automatically from a DHCP Server
2. Web Browser via the Set-up Page
3. ibootrst.exe Program from Dataprobe
4. ARP / Ping

iBoot comes with factory installed IP address **192.168.1.254**. and ready to accept a new IP address from a DHCP Server. If you network has a DHCP server, it will automatically assign an IP address to iBoot the first time it is connected and powered up.

1. Setting the IP address from a DHCP Server

A DHCP server will automatically assign an IP address (dynamic address) as well as Subnet Mask and Gateway to the iBoot. If you power up iBoot without a fixed (static) IP address, the DHCP server will be able to assign an IP address. This is the factory default setting for iBoot. Once an IP address is assigned, you must check the DHCP server to see what address is assigned to iBoot.

If you set the IP address using another method, the address becomes static. To return iBoot to dynamic addressing using DHCP, change the IP address, using the web browser to 0.0.0.0

2. Setting the IP address using Web Browser

To set the IP address using a Web Browser, connect the ethernet connection to your local network and apply power to iBoot.

Open your browser and access iBoot by entering the default (**192.168.1.254**) or current IP address into your browser's Address window. Enter the password (the factory default is **PASS**). Click on Setup and follow the instructions on Page 13.

3. Setting the IP address using the ibootrst.exe

Dataprobe provides an iBoot Reset Program; ibootrst.exe to easily reset the IP address, as well as set the factory defaults in the event the security code is lost. Obtain ibootrst.exe from Dataprobe's web site.

All iBoot tools are available at: www.dataprobe.com/power/iboottools.html

To use ibootrst.exe, the computer running the program must be on the same subnet and network segment as the iBoot is to be programmed to. Same subnet can be directly connected or connected through Ethernet hubs. (NOT routers or switches)

To use ibootrst.exe

Enter the MAC address found on the underside of the iBoot and the desired address. Click on the Set IP Address ibootrst.exe will confirm the proper of the address. If you receive an error message, check the MAC and IP addresses.



IP
bar.
setting

4. Setting the IP address using ARP / Ping

The ARP technique uses a PC running a command line (DOS Window) to set the IP Address. To set the IP address using ARP, connect the iBoot to your local network and apply power. The IP address to be assigned to iBoot must be use the same network segment as the computer assigning the address. ARP does not work across routed or switched networks.

To set the IP address using ARP, the hardware (MAC) address must be known. This address is located on the bottom of the unit. The syntax for the MAC address is: nn-nn-nn-nn-nn-nn

Windows (98 and Later)

1. Open a DOS window. (Run:Command)
2. Type the following command:

arp -s <IP Address> <MAC Address>

Where <IP Address> is the desired IP address (in dotted decimal) for the iBoot and the <MAC address> is the MAC Address of the iBoot. The MAC Address of the iBoot is located on bottom of the unit.

Example: arp -s 63.211.86.165 00-50-c2-05-01-c1 <enter>
 |- new IP addr. --| |----- MAC addr. ----|

3. Ping the iBoot to program the IP address into the iBoot.
 Type: **ping <IP Address>**
 If the ping command returns "host not responding" 4 times then the address has not been programmed properly, or the IP or MAC Address is incorrect. In either case repeat step 2. If the problem persists, contact the Dataprobe Tech Support Hot Line.
4. Delete the entry from the ARP cache by typing:
arp -d <IP Address>
5. Ping the iBoot to confirm that it has been programmed.
 If the iBoot fails to respond, repeat steps 2-4 above. If the problem persists, contact the Dataprobe support hotline.

Unix, Linux, MAC and others

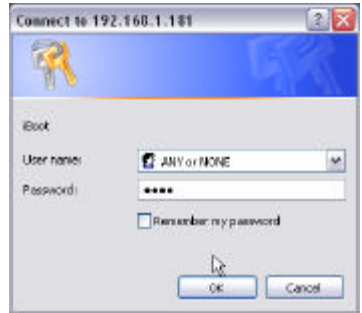
Consult your systems administrator for information on other means of setting an IP Address. The unit should be pinged after the IP Address has been set to confirm proper operation.

Web Browser Operation

Password Protection

iBoot uses two passwords, one for normal power control use and one that also provides access to the setup functions. From the factory, both passwords are the same. (PASS)

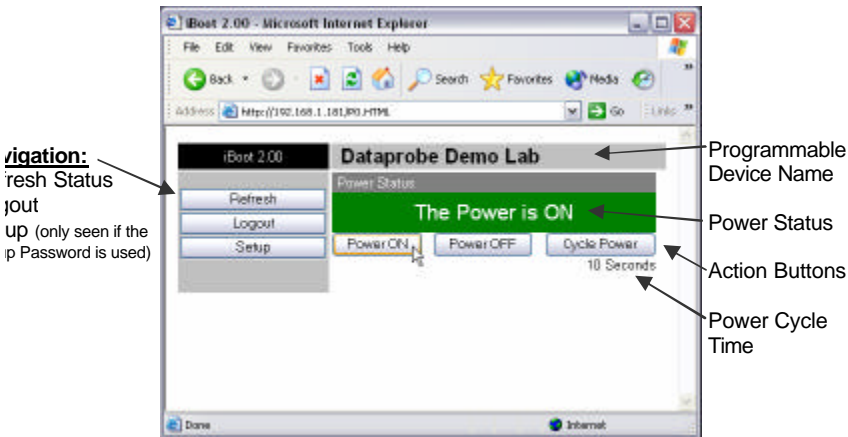
Open your browser and enter the IP address of iBoot into the address bar. If you have changed the IP address by any of the methods described, enter that address, otherwise, use the default IP address **192.168.1.254**



Enter the default password **PASS**, or your password if it has been changed. A Username is not required. When the proper password is received the Control and Status Page is displayed.

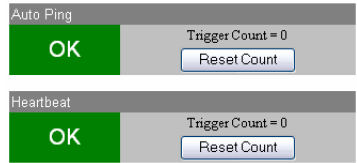
Control and Status Page

Once the password is entered, the following page is displayed. (Only one person can be connected to the iBoot at a time.)



To control the power, click on the appropriate button. During power cycling, the Power Status bar will indicate the temporary status, with a blue background. Once the cycle is complete, the status bar will revert to its original condition. To abort a power cycle, click on either Power On or Power Off buttons. iBoot will assume the status selected.

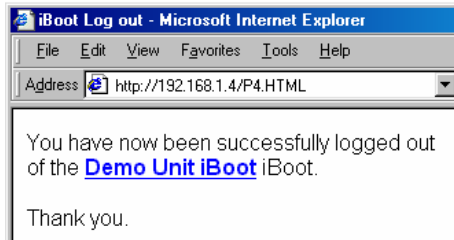
If the Auto-Ping or Heartbeat Features are in use then the page will also display the current status, OK or Triggered, for each, with a counter of how many times that feature was triggered. If connecting with the Setup Password, a reset button for the counter is provided. These features are described in greater detail in the Advanced Operation section on page 16



Use the Refresh link to obtain the latest status of iBoot. Using your browser's refresh button can lead to inadvertent power switching.

To access the Setup page, the Setup Password must be used for the initial login. The factory default for the Setup Password, as well as the operation password is **PASS**. Both passwords can be changed in Setup.

When you are finished iBoot, click on Logout. A confirmation page will be displayed. If you close browser window without clicking Logout, there will minute delay before you access iBoot.



with
your
first
be a two
can re-

iBoot uses an inactivity timer for security. When there is no activity for 2 minutes, the user is logged out and the password will need to be entered again for access. This is to prevent accidental lockout by leaving the user logged in.

iBoot Setup

iBoot setup section consists of several pages. Access any page via the buttons on the left of the page. Each time a setting is changed click on the Apply button for that page to save the changes in iBoot.

Device Settings

Device Name: Set a 20 name to be displayed on the Home page. This assists in identifying which iBoot is accessed.

Cycle Time: 0 to 999 power cycle time. This is the time the power will be off reboot, or on during a power

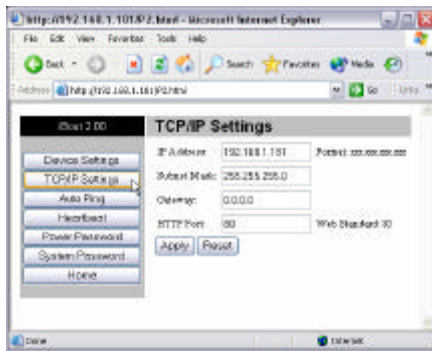


Character top of the being seconds length of during a burst.

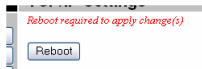
TCP/IP Settings

IP address: Enter either a address, or address **0.0.0.0** to Automatic IP addressing via

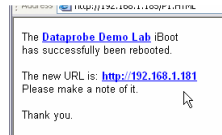
Once you click Apply for this also click the Reboot button appear at the top of the page. IP address will not take effect unit is rebooted.



new IP enable DHCP. section, that will The new until the



Upon Clicking Reboot, a page indicates the new the device. Use this new URL to access iBoot.



URL for

Subnet Mask: Change if required. Consult your network manager for more details. This will be automatically set if using DHCP

Gateway: Change if required. Consult your network manager for more details. This will be automatically set if using DHCP

HTTP Port: This setting is used to allow access to iBoot on a port other than the Web standard Port 80. If the port is changed, you will need to identify the port

number when you enter iBoot's IP address into your browser: if the new port is 9100 then use address **http://192.168.1.254:9100** to access iBoot.

After changing the port, a reboot is necessary. Consult your Network Administrator for available port assignments. Click on the Reboot button at the top of the page to install the new port.

Auto-Ping Setup

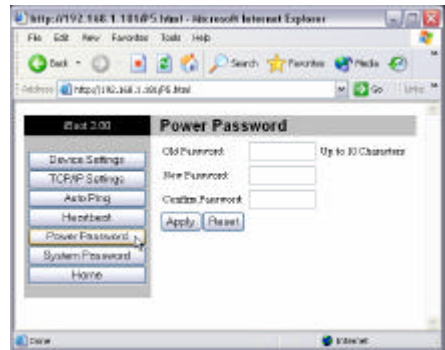
See Advanced Operation for Auto-Ping Setup

Heartbeat Setup

See Advanced Operation for Heartbeat Setup

Power and System Passwords

Two passwords are provided. The Power Password allows access to the control of iBoot, but not to the Setup functions. When this password is used, the main screen will not have a link to Setup. The System Password allows access to both the Main Screen and the Setup Screen. The default for both Passwords is **PASS**. Passwords can be up to 10 characters long and is case sensitive.



Enter the current password then the new password twice to confirm. Click Apply for each password being changed.

OOPS - I forgot my Password

Well, we told you to remember it, but we understand. You can reset iBoot to its factory default conditions.

Dataprobe provides an iBoot Reset Program for Windows™. You will need to have physical access to the iBoot as well as network access.

To reset the factory defaults including the password, use `ibootrst.exe`

All iBoot tools are available at: www.dataprobe.com/power/iboottools.html

For security purposes, you will need to power up the iBoot and complete the reset to factory defaults within two minutes.

1. Run `ibootrst.exe`. **Enter the current IP address of iBoot.**
2. Remove and replace the power to iBoot. You have 2 minutes to complete step 3.
3. Click on the Set Factory Defaults button.

This process does not change the address. It will change all other settings, including Location Name, Ping and Heartbeat to their factory defaults.



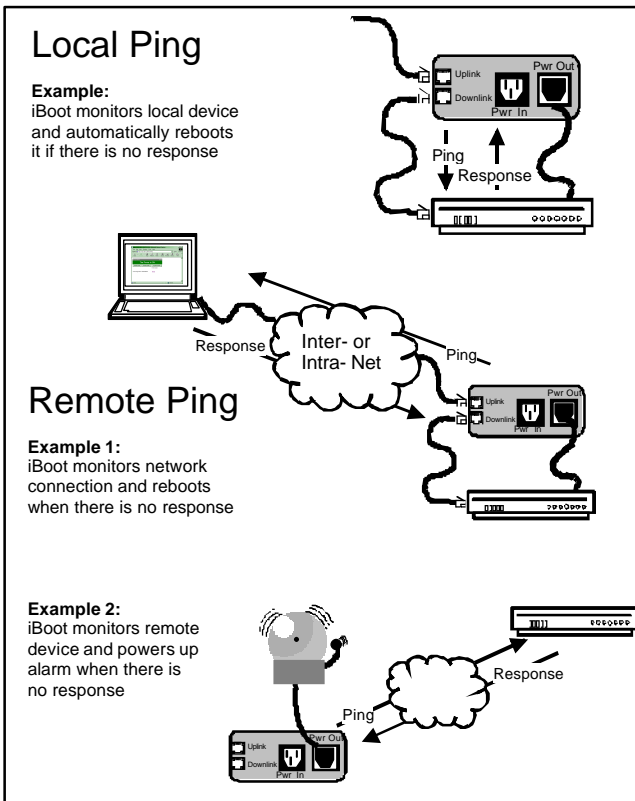
IP
Auto-

Advanced Operation

Auto-Ping

The Auto-Ping feature allows iBoot to automatically detect failed equipment and perform a timed reboot or other power control function (like turning on an indicator or siren). You set any IP address to be periodically Ping'ed. When iBoot no longer detects a response from the address, the programmed power control function is actuated.

- ◆ Use Auto-Ping Locally: Put iBoot next to the device to be monitored and reboot it automatically when it no longer responds.
- ◆ Use Auto-Ping Remotely: Put iBoot at a central facility to monitor a remote system and power up an alert when the remote device no longer responds.



Auto-Ping Setup Page

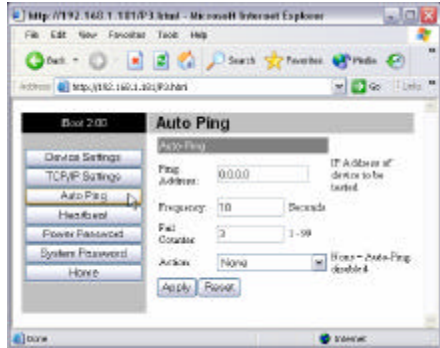
Ping Address: Enter the IP address of the device to be pinged.

Ping Frequency: Enter 1 to 999 seconds. The ping will go out to the selected device this often.

Fail Counter: Enter 1-99 times the ping needs to fail consecutively before the selected action is taken.

Action: select from

- ◆ None (Auto Ping not used)
- ◆ Power On – Latch
- ◆ Power On – Follow
- ◆ Power Off – Latch
- ◆ Power Off – Follow
- ◆ Power Cycle
- ◆ Power Cycle Once



Power On – Latch: Upon loss of ping response, iBoot will power on and remain so until changed via the web, `ibootctl.exe` or direct messaging.

Power On – Follow: Upon loss of ping response, iBoot will power on. When the ping response returns, iBoot will power off.

Power Off – Latch: Upon loss of ping response, iBoot will power off and remain so until changed via the web, `ibootctl.exe` or direct messaging.

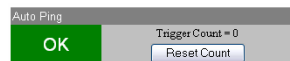
Power Off – Follow: Upon loss of ping response, iBoot will power off. When the ping response returns, iBoot will power on.

Power Cycle: Upon loss of ping response, iBoot will cycle the power. iBoot will wait the Ping Frequency; if the response does not return, the power will be recycled again. This will continue until the ping response returns or Auto Ping is turned off. Make sure your Auto Ping frequency is longer than the time required to reboot your device.

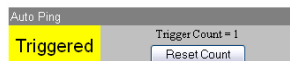
Power Cycle Once: Upon loss of ping response, iBoot will cycle power one time. It will not cycle again automatically until the ping response returns and is lost again.

Using Auto-Ping

With Auto-Ping operational, the main iBoot page will display the current status of this feature. The status will be OK to indicate that iBoot is receiving responses to the ping, or that the fail counter has not yet been exceeded.



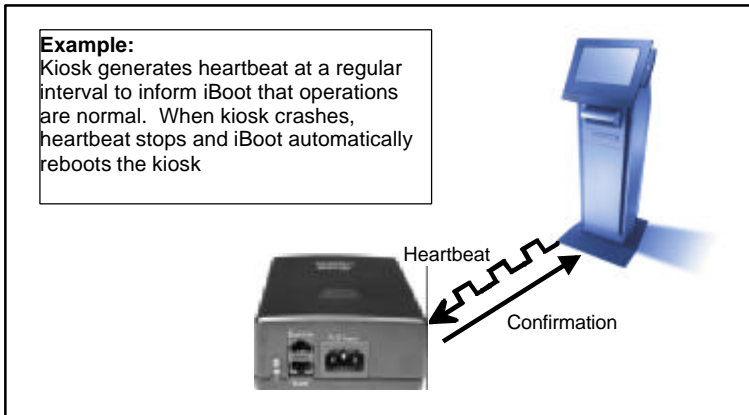
If the fail count has been exceeded, the status will change to Triggered. The Trigger Counter indicates the number of times the Auto-Ping feature has been triggered. A counter reset button is provided when logging in with the System password.



Heartbeat Monitor

Like Auto-Ping, the Heartbeat monitor allows iBoot to monitor one or more devices and take action when these devices fail. With the Heartbeat monitor enabled, iBoot will expect a network message on a regular interval. When it misses a user defined number of intervals, it will perform its programmed action.

Use the heartbeat to insure that you server is running. When it crashes, it will be automatically rebooted.



The heartbeat can be generated in any of several ways

;

- A Windows executable program that will run as a tray applet that will transmit either continuous heartbeats to an iBoot.
- A Windows .dll file is also available for use by Windows™ applications.
- A Windows executable that will run as a tray application, monitor a specific process. If the monitored process stops responding the application will stop transmitting the heartbeat to the iBoot.
- The Heartbeat Protocol will allow developers to imbed this capability directly into their software products.

All heartbeat tools are available at
<http://www.dataprobe.com/power/iboottools.html>

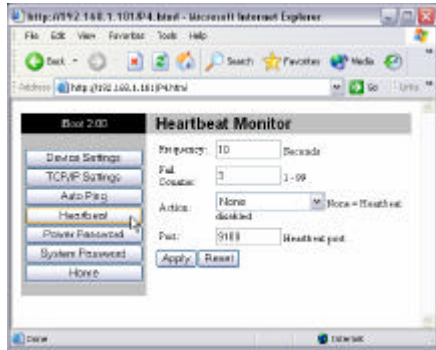
Heartbeat Setup Page

Frequency: Enter 1 to 999 seconds. If the heartbeat is not received within this time it will increment the counter.

Fail Counter: Enter 1-99 times the heartbeat needs to fail before the selected action is taken.

Action: select from

- ◆ None (Heartbeat not used)
- ◆ Power On – Latch
- ◆ Power On – Follow
- ◆ Power Off – Latch
- ◆ Power Off – Follow
- ◆ Power Cycle
- ◆ Power Cycle Once



Power On – Latch: Upon loss of heartbeat, iBoot will power on and remain so until changed via the web, ibootctl.exe or direct messaging.

Power On – Follow: Upon loss of heartbeat, iBoot will power on. When the heartbeat returns, iBoot will power off.

Power Off – Latch: Upon loss of heartbeat, iBoot will power off and remain so until changed via the web, ibootctl.exe or direct messaging.

Power Off – Follow: Upon loss of heartbeat, iBoot will power off. When the heartbeat returns, iBoot will power on.

Power Cycle: Upon loss of heartbeat, iBoot will cycle the power. iBoot will wait the Frequency time; if the heartbeat does not return, the power will be recycled again. This will continue until the heartbeat returns or Heartbeat Monitor is turned off. Make sure your Frequency is longer than the time required to reboot your device.

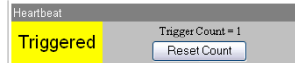
Power Cycle Once: Upon loss of heartbeat, iBoot will cycle power one time. It will not cycle again automatically until the heartbeat returns and is lost again.

Using Heartbeat Monitor

With Heartbeat operational, the main iBoot page will display the current status of this feature. The status will be OK to indicate that iBoot is receiving heartbeats, or that the fail counter has not yet been exceeded.



If the fail count has been exceeded, the status will change to Triggered. The Trigger Counter indicates the number of times the Heartbeat feature has been triggered. A counter reset button is provided when logging in with the System password.



Using the Heartbeat Program

Download the Heartbeat program at www.dataprobe.com/power/iBoottools.html

This program will generate heartbeats to one iBoot at regular intervals. It will also monitor a response back from iBoot to insure proper communication.

Run the program. To begin use, first click Setup. Enter the IP address for the iBoot, the Port configured for the Heartbeat in iBoot, the frequency of heartbeats, and a Fail Count. This fail count does not affect the performance of the iBoot. It is used to indicate when the iBoot has stopped responding to the heartbeats.

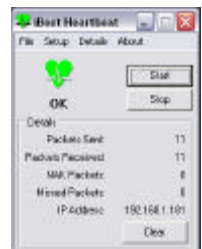


To begin sending heartbeats, click Start. The heart icon will change to green to indicate responses received back from iBoot, or red, to indicate a failure of communication.



Detail about the communication between iBoot and the Heartbeat program can be viewed by clicking on the Details menu. The following information is presented:

- Packets Sent: The number of heartbeats set to iBoot
- Packets Received: Number of valid responses received back from iBoot.
- NAK Packets: Response from iBoot indicating that the packet was received, but corrupted.
- Missed Packets. Heartbeats that were not responded to by iBoot.



To stop the heartbeats, click Stop. To reset all the counters, click Clear.

Control Programs

Dataprobe provides a remote control program to control iBoot directly. This program is useful for creating simple desktop icons for specific power functions for one or more iBoots. It can also be run from a command line and can be called by other programs. (Batch files etc.)

For example, `ibootctl.exe` can be called from server monitoring programs such as WhatsUp Gold™, Servers Alive™ or any program that provides for an external program to be run upon loss of a server.

The iBoot Control Center program allows control of multiple iBoot units. This program provides the ideal means of monitoring and managing a large number of iBoots distributed throughout your organization.

Both programs are available from Dataprobe at www.dataprobe.com/power/iboottools.html

Direct TCP/Telnet Control

For application developers, iBoot also supports control via direct TCP communications. To control iBoot in this manner requires opening a socket to iBoot and sending specific commands. Information on the required techniques and protocol are available at Dataprobe's web site at www.dataprobe.com/power/iboottools.html. Dataprobe can provide perl scripts and other programmer resources to assist in integration of iBoot into any system.

Specifications

Model

iBoot A/C Power Control Module Ver 2.x

SKU: 1410010

Physical

Height 2.25 in.
 Width 4.50 in.
 Depth 6.00 in.
 Weight 1.25 lb.

AC

Input: 3 Prong, Male, IEC 320 input connector.
 Input Cord Spec...16AWGX3C 10A 250 UL/CSA/VDE Rated
 (1.25mm²X3C)
 Voltage Range: Auto Sensing 105-240 VAC
 Switched Receptacle: 3 Prong Female IEC
 Capacity: 12 Amps Max at 105-125 VAC,
 10 Amps Max at 210-240 VAC

Network

Dual 10/100 Unshielded Twisted Pair Ethernet Jacks.
 Dual Jack Hub Built-in
 IP Addressed
 Internal HTTP Web Server,
 Forms Processing Browser required

User Settings Record your Setup here for reference

Location	
MAC Address	
IP Address	
Subnet Mask	
Gateway	
HTTP Port	
Auto-Ping Address	
Auto-Ping Port	
Heartbeat Port	
Notes:	

TECHNICAL SUPPORT, RETURNS and WARRANTY

Dataprobe Technical Support is available 8:30AM to 5:30PM ET to assist you in the installation and operation of this product. To obtain Technical Support call our [Tech Support Hotline at 201-967-8788](tel:201-967-8788), or Email us at tech@dataprobe.com. Please have the following information available when you call:

- Model of Product
- Serial, Lot and/or Version Numbers
- Data of Purchase
- Name of Seller (if other than Dataprobe)

If you purchased this product through an **Authorized Dataprobe Reseller**, you should contact them first, as they may have information about the application that can more quickly answer your questions.

WARRANTY

Seller warrants this product, if used in accordance with all applicable instructions, to be free from original defects in material and workmanship for a period of One Year from the date of initial purchase. If the product should prove defective within that period, Seller will repair or replace the product, at its sole discretion.

Service under this Warranty is obtained by shipping the product (with all charges prepaid) to the address below. Seller will pay return shipping charges. Call Dataprobe Technical Service at (201) 967-8788 to receive a Return Materials Authorization (RMA) Number prior to sending any equipment back for repair. Include all cables, power supplies and proof of purchase with shipment.

THIS WARRANTY DOES NOT APPLY TO NORMAL WEAR OR TO DAMAGE RESULTING FROM ACCIDENT, MISUSE, ABUSE OR NEGLIGENCE. SELLER MAKES NO EXPRESS WARRANTIES OTHER THAN THE WARRANTY EXPRESSLY SET FORTH HEREIN. EXCEPT TO THE EXTENT PROHIBITED BY LAW, ALL IMPLIED WARRANTIES, INCLUDING ALL WARRANTIES OF MERCHANT ABILITY OR FITNESS FOR ANY PURPOSE ARE LIMITED TO THE WARRANTY PERIOD SET FORTH ABOVE; AND THIS WARRANTY EXPRESSLY EXCLUDES ALL INCIDENTAL AND CONSEQUENTIAL DAMAGES.

Some states do not allow limitations on how long an implied warranty lasts, and some states do not allow the exclusion or limitation of incidental or consequential damages, so the above limitations or exclusions may not apply to you. This warranty gives you specific legal rights, and you may have other rights which vary from jurisdictions to jurisdiction.

WARNING: The individual user should take care to determine prior to use whether this device is suitable, adequate or safe for the use intended. Since individual applications are subject to great variation, the manufacturer makes no representation or warranty as to the suitability of fitness for any specific application.

**Dataprobe Inc.
11 Park Place
Paramus, NJ 0765**

More Power Control Solutions

8 Outlet Remote Control Power Strips



Rack Mounted 8 outlet power strips can be controlled by Web / Telnet / Modem / Serial or DTMF dialing tones. Visit www.dataprobe.com/power/8outlets.html

Phone Controlled Power Switch

PowerPAL offers remote control of a single A/C outlet using any tone dial telephone. PowerPAL connects to an existing dial line, and any telephone equipment; phone, fax, modem. Normal calls pass transparently through PowerPAL; only when special access codes are detected by PAL will the power control functions be enabled. User selectable security, call processing and power control features are examples of such capabilities. Visit www.dataprobe.com/power/ppal.html



Remote Power Control + Console Port Access



Access four console ports and reboot four devices with this integrated Remote Site Manager. From one call you can switch between any of the four serial ports or access any of the A/C outlets for complete access and control. The internal modem option turns this unit into a completely integrated system that will minimize costly trips to remote sites. Visit www.dataprobe.com/power/4pk415.html



11 Park Place
Paramus, NJ 07652
201-967-9300

www.dataprobe.com
tech@dataprobe.com
Doc: iBoot20_v030731E