



DATA CENTER INFRASTRUCTURE SOLUTIONS

Channel Products Catalog



Table of Contents

- 1.** Racks and Integrated Solutions..... 3
- 2.** Single-Phase UPS & Power Assurance Package 5
- 3.** Three-Phase UPS 8
- 4.** Rack Power Distribution 9
- 5.** Thermal Management..... 10
- 6.** IT Management..... 11
- 7.** Software.....17

RACKS AND INTEGRATED SOLUTIONS

SmartCabinet™ Intelligent, Integrated Infrastructure in a Single Rack



Capacity: 1.5-16kW

Rack size: 13U, 24U, 42U

Type: Single rack

Floor: Primarily non-raised

Key Applications:

Computer rooms; network closets; data centers

The SmartCabinet provides standardized IT infrastructure for remote locations, network closets and other edge of the network applications. The SmartCabinet comes in pre-configured configurations that can be tailored to meet your specific needs.

- Simplifies the management and deployment of distributed IT.
- Provides intelligent and integrated infrastructure for any type of IT.
- Remote management, power protection, environmental monitoring, and physical security in one simple to deploy package.
- Pre-configured for various Converged IT loads such as Dell PowerEdge VRTX and FlexPod.

SmartRow™ Intelligent, Integrated Infrastructure in a Self-Contained Line-Up



Capacity: 20-36kW
3-10 racks

Type: Self-contained

Floor: Primarily non-raised

Key Applications:

Small data centers; remote sites; disaster recovery

The SmartRow solution has a room neutral design that lets you avoid many of the significant costs that come with a conventional data center buildout.

- Favorable implementation costs compared to using a conventional data center approach, due to savings from integrated fire suppression and ability to work in an existing non-raised floor environment without dedicated room cooling.
- Reduce energy consumption by up to 27% compared to a data center with conventional design, perform less maintenance and reduce the costs of adding new equipment.
- Order and install in just weeks.

Liebert® MCR™, Integrated Support Systems in a Single Enclosure



Capacity: 1.6 and 3.2 kW

Type: Self-contained

Floor: Primarily non-raised

Key Applications:

Network closets, server closets or small rooms

The Liebert MCR is a data center rack system that features a load-sized, computer-grade air conditioner located at the bottom of the enclosure, offering top-mount design, supplying cool air to sensitive equipment on all levels.

- Integrated cooling cabinet with optional power management and monitoring accessories, for loads up to 1.6kW and 3.2kW.
- Includes primary and offers optional backup cooling feature.
- Mobile design for quick deployment – Lets you place a self-contained minicomputer room right where you need it, today or tomorrow.
- Lower system TCO, competitively priced as an integrated system, compared to purchasing separate components.
- Ideally suited for network closets, server closets or small rooms.

DCE™ Rack System



Capacity: 3,000 lbs
Static Load

Rack Sizes: Heights: 24U,
42U, 45U, 48U

Widths: 600mm, 700mm,
800mm

Depths: 1100mm, 1200mm

Floor: Raised or non-raised

Key Applications: Servers
and Networking equipment

Approvals: EIA310E, UL2416,
BAA/TAA Compliant, IBC2012

The DCE rack system is ideal for today's data centers and is designed to meet flexibility, ease of installation and delivery requirements. The DCE comes in pre-configured rack configurations customized to meet your specific needs.

- Compatible with Vertiv™ Rack PDU's, Liebert® Rackmount UPS, Aisle Containment, and Liebert modular busway.
- Factory installation of rack accessories for fast deployment.
- Easy installation saves time and money: tool-less hinges, dual split side panels, 19" rail adjustment, U markings on rails, low profile casters, tool-less accessories.

DCF™ Optimized Rack Systems



Capacity: 3,000 lbs Static Load

Rack Sizes: Heights: 42U, 48U

Widths: 600mm, 800mm

Depths: 1100mm, 1200mm

Floor: Raised or non-raised

Key Applications: Servers and
Networking equipment

Approvals:
EIA310E, UL2416

The DCF optimized 19" data center rack system integrates your computing hardware, power management technologies and peripherals. It provides superior design and flexibility, allowing optimal data center equipment performance and easy installation.

- Compatible with Vertiv Rack PDUs, Liebert rackmount UPS, Aisle Containment and Liebert MB modular busway — all from a single source.
- Factory installation of rack accessories, for fast deployment
- Easy installation saves time and money: lift off hinges, dual side panels, 19" rail adjustment, U markings on rails, low profile casters, tool-less accessories.
- Integral part of the total data center solutions from Vertiv saves time and money on configuration and integration.

SINGLE-PHASE UPS & POWER ASSURANCE PACKAGE

Liebert® PSP™ Single Phase UPS, 350-500VA



- Economical, yet featured small UPS.
- Good for workstations, small routers and bridges, point-of-sale terminals.
- Up to four minutes of battery back up at full load.
- Two-year, no hassle replacement warranty.

Liebert PSA4™ Single Phase UPS, 500VA - 1500VA



- Low-cost line interactive UPS protection with features not available in price-competitive models.
- Good for desktop PCs, workstations, Servers, small routers, switches, point-of-sale terminals.
- 2 minutes run time at full load.
- Desktop configuration with Advanced shutdown and monitoring capabilities.
- User friendly LCD display and Hot swappable user replaceable battery.
- 3 year full unit coverage with our no-hassle, advanced replacement warranty.
- TAA Compliant.

Liebert PST4 Offline UPS, 350, 500, 660 and 850 VA



- Reliable power protection for desktop equipment and home or office computers and networks, and entertainment equipment.
- Up to 2 minutes back up time at full load.
- 3 year full unit coverage with our no-hassle, advanced replacement warranty.
- TAA Compliant.

Liebert® PSI™ Single Phase UPS, 1000VA - 3000VA



- Cost-effective network UPS with advanced management and monitoring features in a rack or tower format.
- Good for PCs, network workstations, servers, network closets, large network peripherals and VoIP loads.
- User replaceable batteries and resettable circuit breakers for fast and simple maintenance and recovery.
- Available with Liebert IntelliSlot® IS-WEBRT3 Web Card that provides SNMP and web-based management, for a totally integrated, cost-efficient solution that allows remote monitoring, start-up or restart for connected equipment.
- Convertible rack or tower configuration.
- Two-year, no hassle advanced replacement warranty.

Liebert GXT4™ Single Phase, On-line UPS, 500VA - 10kVA



- On-line UPS provides zero transfer time so your critical load is supported by a seamless flow of conditioned power.
- ENERGY STAR® qualified models.
- Eco Mode option for improved efficiency.
- Liebert Intellislot IS-UNITY-DP communications card (Web and SNMP protocols).
- Convertible rack/tower configuration.
- Optional Environmental sensors, connect up to 10 simultaneously (temperature, humidity, contact closure, and leak detection).

Liebert MicroPOD™ Maintenance Bypass Switch, for UPS Systems 3kVA and smaller



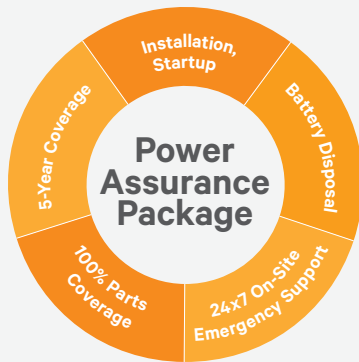
- “Must have” accessory, provides power transfer to avoid shutdowns due to UPS servicing.
- Specifically designed to mount to the rear of the Liebert GXT UPS or capable of separate rack mounting allows it to be used with any single phase UPS.
- Provides bypass and multiple output plug configurations for easy system configuration.
- Extremely affordable – Enables broad usage in critical applications.

Liebert® APS™ Single Phase, On-line UPS, 5kVA - 20kVA



- True on-line double conversion UPS.
- Ideally suited for small-to-medium data center, network closets and VoIP in either a rack or free-standing format.
- Offers capacity-on-demand with scalable FlexPower™ core modules – allowing capacity upgrades in 5 kVA/4.5 kW increments - without powering down.
- Liebert Intellislot IS-UNITY-DP communications card (Web, SNMP and BMS protocols).
- Convertible rack/tower configuration.
- Optional Environmental sensors, connect up to 10 simultaneously (temperature, humidity, contact closure, and leak detection).
- ENERGY STAR® qualified models available.
- Two-year, hassle-free factory warranty.

Power Assurance Package™



The exclusive Power Assurance Package offers lifecycle power management for critical single-phase UPS systems. It eliminates the concerns surrounding power support.

- Available with Liebert APS, PSI and Liebert GXT UPS products, from 500VA – 10kVA
- Startup services
- 5 year protection plan
- Safe disposal of UPS/battery
- 24x7 on-site emergency response
- Parts and labor coverage

THREE-PHASE UPS

Liebert® EXM™ 3-Phase UPS, 10-250kVA



- The row-based Liebert EXM is a transformer-free, on-line UPS that provides modular hardware scalability and N+1 redundancy from 10-200kVA in 208 volt configurations and 50-250kVA in 480 volt configurations.
- Reduces energy consumption and operating expenses with up to 99% efficiency in Eco Mode and up to 97% efficiency in double conversion mode.
- Offers future-proof scalability for capacity or redundancy.
- Complemented with a line of optimized ancillaries such as maintenance bypass and battery cabinet options designed to minimize footprint and cost.
- Innovative touchscreen control panel offering unprecedented situational awareness, customer configurability, multiple levels of access security and glove safe operation.
- Improves issue resolution and enhances reliability via the optional integrated Alber BDSUi™ battery monitoring system, compatible with traditional VRLA batteries, Lithium Ion batteries, or other energy storage devices.
- Enhances data center visibility and control via integration with data center infrastructure management solutions, such as Liebert Nform Centralized Monitoring Software, Liebert SiteScan Web Centralized Monitoring and Control and the *Trellis™* platform.
- Communications and Environmental Monitoring: Leverage the Unity Communications card and sensors and monitor: Temperature, Humidity, Access, Leaks and More.

RACK POWER DISTRIBUTION

MPH2™ Managed Rack PDU



- Single and Three phase 0U, 1U, 2U models available to control and manage individual receptacles and/or groups of loads and devices in the following versions:
 - Rack PDU Metered
 - Rack PDU Metered/Outlet Switched
 - Outlet Level Metered
 - Outlet Level Metered/Switched
- Industry leading operating temperature - 60°C / 140°F to support hot Internal rack environments.
- Lowest power consumption of all switched rack PDU designs supports lower operating costs for datacenter.
- Up to four MPH2 rack PDUs may be interconnected as a Rack PDU Array™, consolidating user IP connections and device monitoring.
- Accurate power metering of +/-1% voltage & current for assured oversight.
- Bi-stable relays ensure basic power distribution in the event that intelligence is compromised.
- Remote management available through web interface of the rack PDU, Avocent Rack Power Manager, Avocent DSView™, and Liebert Nform™.
- Integration with Avocent ACS, MergePoint Unity and UMG for remote out of band access.
- Notifications on the loss or removal of individual rack equipment loads.

MPX™ Adaptive Rack PDU



- Scalable input Power Capacity – 100 - 120V 1-ph 20A/30A, 200 - 240V 1-ph 20/30A, 200 - 240V 3-ph 20/30/50/60A, 208/120V 3-ph 20/30A, 415V/240V 3-ph 20A/30A.
- Hot swappable Branch Receptacle Modules with branch monitoring OR receptacle level monitoring and control.
- Daisy chainable with other MPH2 / MPX units and support for environmental monitors as well as local display module.
- 55°C / 131°F temperature rating and +/- 1% metering accuracy.
- Remote management capability through onboard web interface, Avocent Rack Power Manager, Avocent DSView and Liebert Nform.
- Notifications on the loss or removal of individual rack equipment loads.

DI-STRIP® Basic Rack PDU



- Flexibility with multiple configurations and input power options: single or three phase power via a single plug connection.
- Critical rack space operating temperature—up to 55°C / 131°F to support hot Internal rack environments.
- Simple and quick installation. Available in vertical zero U and rackmount form factors.



The exclusive Distribution Assurance Package offers lifecycle service and support from a trusted OEM service partner for your rack PDUs, ensuring system availability.

- Available with Vertiv MPH2™, MPX™, and Knürr DI-STRIP rack PDUs
- Startup and installation services
- OEM expertise
- 5-year protection plan
- 24x7 on-site emergency response
- Parts and labor coverage
- Optional removal and disposal

THERMAL MANAGEMENT

Liebert® CRV™ Self-Contained Row-Based Data Center Cooling, 19.6-40kW



- Integrates within a row of data center racks, providing cooling close to the server heat source, for efficient and effective data center heat management.
- Precision cooling and humidity control.
- Features variable speed EC plug fans and variable capacity digital scroll compressor.
- Operates efficiently with Liebert iCOM controls.

Liebert XDA, Air Flow Enhancer, 1000CFM



- Fits most rack enclosures. Installs inside or outside of the rack.
- Enhances the cooling effectiveness of data center precision cooling systems.
- Redundant fans and dual power feeds, to ensure continuous availability.
- Ships as a complete kit, Installs easily.

IT MANAGEMENT

Avocent® ACS 800 and ACS 8000 Advanced Console Systems



Common ACS800/ACS8000 features

- Secure in-band and out-of-band access to manage, monitor, and troubleshoot servers, routers, network switches, firewalls, UPS systems and PDUs.
- Security features are boosted by strong encryption to ensure proper access with comprehensive audit capability. IPSec VPN, TACACS+, RADIUS, LDAP and FIPS-140-2.
- Controlled access to your equipment with high reliability, single point of authentication and remote accessibility to safely and efficiently manage your network.
- Support for centralized administration of access and control, with DSView™ 4.5 management software.
- Zero Touch Provisioning provides automated configuration of ACS devices.
- Integrated Power Management with Vertiv® PDUs such as MPH2™, MPH™ and MPX™, Liebert® UPS systems as well as third-party power product vendors.
- USB ports to allow expandability and integration with new target/IoT devices and sensors.
- Environmental Sensor Port and digital Inputs to read conditions around equipment such as temperature, humidity, smoke, leak and pressure differential as well as monitoring of dry contact sensors for activity.
- Support for RS-232/ RS-422 and RS-485 protocols allows for interactions with Vertiv and 3rd party industrial and commercial equipment.
- Support for 4G/LTE cellular failover via external Cradlepoint routers as well as optional internal analog modem.

Additional features on ACS 8000

- Rugged, rack-mountable 1U chassis with single or dual integrated power supplies.
- 8, 16, 32 and 48 port versions available.
- Integrated support for 2 1 Gb SFP fiber modules.
- SD card slot for removable memory.

Additional features on New ACS 800

- Compact chassis ideal for Edge applications with single external power brick.
- 2, 4, or 8 port versions available.
- Desk top mount standard w/optional rack, wall or DIN-rail mounting kits.
- Digital outputs for event triggered control of lights, fans, etc.

Avocent® AutoView™ KVM Switches



- The AutoView 3000 series offers consolidated server management options for small data centers and remote/branch/offices.
- Simplify local and remote access to your IT infrastructure with a best-in-class, field-proven line of Avocent switches.
- Flexible and scalable solution. Switched can be tiered to provide consolidated management of up to 256 targets. The AV3000 series also provides remote management capability and offers features such as virtual media, external authentication and session sharing.
- CAC/Smart Card support with encryption and password protection provides security you can depend on.

Avocent MergePoint Unity™ KVM over IP Switch



- Advanced Remote Management provides secure and remote, out-of-band connections directly to the physical KVM, USB and serial ports to complement existing in-band software management tools.
- Meet service level agreements and minimize downtime through a unified approach that provides IT administrators a faster method to diagnose, reconfigure or restore equipment.
- Virtual Media support enables USB media such as CD-ROMs, flash memory and external drives to be virtually attached to a remote server's USB port.
- CAC/Smart Card Support allows remote or local users to map a USB-based smart card reader to the attached servers and authenticate using their smart cards.
- FIPS 140-2 compliance: based on the FIPS 140-2 validated cryptographic modules (certificate number 1051).
- Remote KVM sessions support HTML5 which eliminates the need to install a java on clients.

Avocent HMX 5000/6000 High Performance KVM System



- Digital, IP-based solution that provides a highly flexible way to connect hundreds of users to thousands of servers and workstation equipment in a secure, real-time manner.
- Ideal for control rooms with real-time control with pixel perfect digital video, supporting resolutions up to 2560 x 1600 at 60Hz.
- Supports redundant network operation through units that automatically detect whether the network is in operation and automatically change to a second port when a failure is detected.
- Enables connection of USB devices from mice and keyboards through to graphics tablets and joysticks alongside mass storage devices.
- Remote maintenance and out-of-band BIOS level access with high video performance through Real VNC viewer.
- Easy centralized management with user rights and audit trails through the HMX Advanced Manager.

Avocent® Matrix Direct Connect High Performance KVM System



- Digital, direct connect solution that provides a scalable environment through the use of proprietary switches, providing guaranteed performance quality.
- Instant switching, less than half a second.
- Digital and analog video support with an Advanced Dambrockas™ Video Compression algorithm enables a pixel-accurate, lossless video experience with lag-free, real-time interaction to computing equipment via any USB enabled device.
- The Avocent Matrix Manager allows group and device permission management, event notifications and improved auto failovers.

Avocent LV 3000 KVM Extenders



- Avocent LV 3000 extenders let you place a keyboard, monitor, mouse, speakers and microphone up to 1,000 feet away from a computer or Avocent KVM switch.
- VGA resolutions of 1920 x 1200 are achievable at up to 300 meters (1000ft).
- The LV 3000 series extenders are delivered in a zero configuration state so you can plug them in and start working immediately. There's no need for additional drivers or software.
- USB 2.0 (low and full speed) support allows all USB compatible accessories (including isochronous devices) to be extended. The receiver unit has a built in 4 port USB hub to enable a complete desktop to be located remotely, including a keyboard, monitor, mouse, disk drive, flash memory stick, webcam, and any other device that would normally be plugged into your computer's USB port.

Avocent LV 4000 KVM Extenders



- Avocent LV 4000 extenders enable you to locate your critical computing hardware in a secure and temperature controlled environment, while maintaining the same user experience. This improves data security, removes computers from harsh environments and addresses limited workspace environments.
- Video, USB 2.0 (Low and Full speed) and audio all pass along a single cable, providing up to 50 meters of extension.
- The transmitter is powered via its USB port to reduce the need for external power supplies.
- Supports DVI-D (HDMI with adapter) video on single or dual screens, with resolutions up to 1920 x 1200 @ 60Hz.
- The LV 4000 series extenders are delivered in a zero configuration state so you can plug them in and start working immediately. There's no need for additional drivers or software.
- USB 2.0 support for any USB human interface device from mice and keyboards to graphics tablets, touchscreens, jog shuttles, joysticks, 3D explorers and mass storage devices. Full speed (12Mbps) isochronous devices such as headsets are also supported.

Avocent® LV 5000 Series Extenders



- The Avocent LV 5000 series of high performance extender solutions provide an at the desktop experience in environments where conditions make it is advantageous to operate and manage critical business systems from a secure, monitored location. Users can access systems and applications remotely without sacrificing video quality, audio quality or device capability.
- High-definition Display Port Video Supports DisplayPort Dual Mode (DP++) and can transmit maximum resolution of up to 3840x2160 (UHD 4K) with a single monitor, or two 1920 x 1200 (WUXGA) video streams in a dual monitor configuration.
- USB 2.0 Enables connection of up to six USB human interface devices including mice, keyboards, graphics tablets, touchscreens, jog shuttles, joysticks, 3D explorers, mass storage devices and isochronous devices like webcams and headsets.
- HD-quality High definition analog stereo audio input and output. S/PDIF input also supported.
- Plug and play The LV 5000 Series extenders are delivered in a zero config state so you can plug them in and start working right away. There's no need for drivers or software to be installed.

Avocent Rack Mount Power Supply



- Each unit provides 8 or 16 independently controllable 12V outputs.
- Cable converters available for 12V to 5V conversions.
- Control and monitor the RMPSU via a secure HTTP interface.
- Rated to 500,000hrs.

Secure Desktop KVM and KM Solutions

These switches are designed to meet the stringent specifications of the U.S. government and are compliant to NIAP Protection Profile for Peripheral Sharing Switches, version 3.0



Cybox SC 800 and SC 900 Secure Desktop KVM Switches



- Isolated ports on the switch provide discrete processing paths to each system, preventing data leakage, transfer or crosstalk between adjacent ports.
- Unique NUM Lock, CAPS Lock and Scroll Lock indicators to improve ease of use.
- An optional Dedicated Peripheral Port (DPP) provides a secure connection to common access card readers, as well as additional types of authentication devices including facial recognition scanners and fingerprint readers.
- Broad range of video connections including DVI-I, Display Port, HDMI, and support for resolutions up to UHD 4K.

Cybox SCKM 100 Secure Desktop KM Switches



- Cursor navigation switching lets users switch control between systems by simply moving the mouse cursor from one display monitor to another.
- An optional Dedicated Peripheral Port (DPP) provides a secure connection to common access card readers, as well as additional types of authentication devices including facial recognition scanners and fingerprint readers.

SwitchView Desktop KVM and KM Switching Solutions

Feature-rich desktop switching, designed to streamline the desktop experience and enhance user productivity.

Avocent® SV 200 and SV 300 Desktop KVM Switches



- Advanced video support including DVI-I, HDMI, DisplayPort, and support for resolutions up to UHD 4K assures image quality is highly accurate and video plays at the highest definition possible.
- Managed copy and paste allows content to be copied from one system to another.
- Independent audio and USB switching lets users freeze audio and USB 3.0 peripherals while simultaneously working on a different system.
- Multiple USB ports provide easy connectivity to external USB devices, quick data transfer and high-speed charging of mobile devices.
- Mobile high-definition link allows media contained on mobile devices to be viewed on connected HDMI monitors.

Avocent® SVKM 100 Desktop Switches



- Cursor navigation switching lets users switch control between systems by simply moving the mouse cursor from one display monitor to another.
- Independent audio and USB switching gives users the ability to freeze audio and USB devices to a specific channel so these feeds are maintained as the cursor switches between system monitors.
- Managed copy and paste allows content to be copied from one system to another.
- High-speed mobile device charging port provides a quick way to charge mobile phones and other devices.
- Pre-set display configurations are easily modified for specific environments with a user-friendly administrator tool, enabling flexible assignment of USB devices for each user.

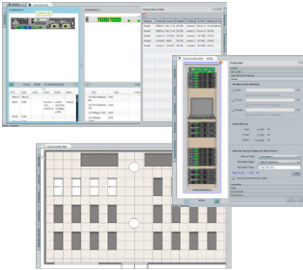
LCD Tray Family



- Provides an installed and integrated access point in the data center.
 - 18.5" HD widescreen monitor, full sized keyboard, and touchpad.
- Supports access in only 1U of rack space.
- Saves time for data center employees
 - Eliminates cumbersome and inefficient crash cart access.
 - Ensures immediate server access for maintenance and troubleshooting.
- Global certifications and availability.
- Dual USB 2.0 pass-thru.
- 1U rack mount.
- 18.5" HD LED-backlit monitor.
- Keyboard available in 11 languages.
- TAA compliant version available.
- Power efficient during operation and standby.
- Available 8 or 16 Port digital KVM switch bundle.

SOFTWARE

Avocent® Data Center Planner



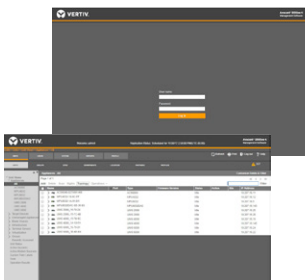
- Simplify data center management with intuitive planning and design capabilities.
- Visualize infrastructure using real-world power data.
- Model current/future rack capacities.
- Visualize end-to-end connection data.

Avocent Rack Power Manager



- Standalone Rack Power Management software solution with capacity to handle up to 2500 Vertiv™ rack PDUs.
- Power monitoring and automatic alerts, historical power and energy consumption reports – canned and custom; scheduled and snapshot.
- Secure centralized access and control of Rack PDUs.
- Custom grouping capabilities with centralized information for all levels of data center.

Avocent DSView™ 4.5 Management Software



- Remote access to servers and the network infrastructure.
- Incorporating a Hub-Spoke framework for database redundancy and distributed access.
- Providing detailed event tracking, session logging and alerting.
- Securely and conveniently combining access to out-of-band and in-band services.

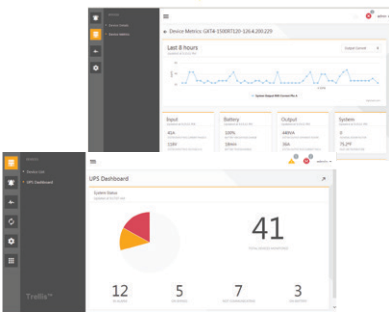
Liebert® Nform™ 4.5 Monitoring Software



Liebert Nform monitoring software enables IT and facilities managers charged with the uptime and support of business critical data center performance by offering full service monitoring, proactive alarms, and tracking of the mission critical power and thermal infrastructure.

- Monitor and control all critical power and thermal infrastructure assets and sensors around and into the rack.
- Comprehensive and intuitive management dashboards, analysis tools and trend reports.
- Autodiscover new power and thermal infrastructure assets to eliminate extra configuration time.

Trellis™ Power Insight Application



Trellis™ Power Insight manages the following common problems in the data center:

- Power Failure – Total loss of utility power
- Power Surge/Spike – Short-term voltage event that exceeds 110% of normal
- Power Sag – Short-term low voltage event
- Brownout – Under voltage event that occurs for a few minutes to a few days
- Over-Voltage – Increase in voltage event that occurs for a few minutes to a few days
- Frequency Variation – Loss of stability in the power supply's normal frequency of 50 or 60 Hz

Trellis™ Quick Start



The *Trellis™* Capacity Management Solution

- Maintain a list of all assets/devices.
- Track device details such as faceplate values and location.
- Provide a means to model actual floor layout.
- Locate the ideal placement for devices.
- Create future spaces for devices to be deployed.
- Build and manage deployment plans in the future.
- Plan for future physical device location (including power, thermal and space capacity).
- View dashboards with drill down capability.



The *Trellis™* Data Center Monitoring Solution

- Monitor critical power and thermal infrastructure.
- Manage rack PDU's.
- Quickly respond to issues that threaten business operations.
- Improve performance by establishing KPI's for your data center.
- Adhere to SLAs for compliance.
- Monitor and calculate energy usage for financial analysis.
- Monitor environmental sensors.



The *Trellis™* Energy Management Solution

- Identify real-time power consumption.
- Calculate utility cost at the system and unit levels.
- Dashboard reporting.
- Calculate performance metrics: PUE and DCiE.
- Determine current and future energy needs based on historical data.
- Improve resource usage.
- Manage the complete power chain with a dynamic one-line diagram.



The *Trellis™* Thermal Management Solution

- Visualize thermal heat maps.
- Improve response times.
- Reduce operating costs.
- Align thermal capacity with future planning.
- Balance cooling capacity with IT load.



VertivCo.com | Vertiv Headquarters, 1050 Dearborn Drive, Columbus, OH 43085, USA

© 2018 Vertiv Co. All rights reserved. Vertiv and the Vertiv logo are trademarks or registered trademarks of Vertiv Co. All other names and logos referred to are trade names, trademarks or registered trademarks of their respective owners. While every precaution has been taken to ensure accuracy and completeness herein, Vertiv Co. assumes no responsibility, and disclaims all liability, for damages resulting from use of this information or for any errors or omissions. Specifications are subject to change without notice.

VR-01407 (R02/18)